

ZAINAB GHAREEB  
DESIGN



[+973] 36400434



[zainabghareebdesign@gmail.com](mailto:zainabghareebdesign@gmail.com)



[zainabghareebdesign](https://www.instagram.com/zainabghareebdesign)



OFFICE 112, 11<sup>TH</sup> FLOOR, BUILDING 1014,  
ROAD 3621, BLOCK 436, SEEF HUB - BAHRAIN

TABLE OF CONTENT

Message From Founder	4
Our Team	5
Missin & Vision	6
<b>Interior Design</b>	
<i>Commercial</i>	
GIB	8
Tamkeen Realestate	10
AlFateh Group	12
Awal Express	14
N Yoga Center	16
Gens Salon	18
Kouture Cakes	20
The Pet Nook	22
Achberha Shop	24

## *Housing*

Orchid Tower	26
Jeewan Villa	28
Durrat AlMuharraq	30
Buri Villa	32
Almajid Villa	34
Amwaj Villa	36
Villa Jerdab	38

## **Architectural Design**

Askar Villa	50
Buhair Villa	51
Tubli Villa	52

## **Landscape**

Moh'd Majeed Villa	54
Amwaj Villa	56
Albanna Landscape	58
Shakhura Landscape	60



# ZAINAB GHAREEB

## Message From Founder

After 7 years of being in the Architectural Design field, I realized that my hopes for the design industry were different, so I took everything I learnt and decided to start again with an open and inspired mind. Being the child of Bahrain and observing it for years, I saw that it has so much potential to rise within the design industry. I therefore left with valuable knowledge to start again with an open and inspired mind.

## OUR TEAM



**Sajida AlOraibi**  
Interior Designer

- Bsc in Interior Design From University of Bahrain
- 2 Years experience in interior design field
- Enthusiastic and highly motivated interior designer who has a clear understanding of her role and a ,processing a comprehensive designing and developing projects to specifications.



**Fatima AlAlawi**  
Interior Designer

- Bsc in Interior Design From University of Bahrain
- 2 Years experience in interior design field



**Mahmood Yusuf**  
Architect

- Bsc in Artchitecture From University of Bahrain



**Jenan Mansoor**  
Architect

- Bsc in Artchitecture From University of Bahrain
- 3 Years experience in Architectural & interior design field



## GIB

### Interior Design

A modern corporate style was inspired for this project with greyish color being the dominant of them all and some touches of light grey stone on the background holding the logo of the company.



**MODERN STYLE**

Triangular flooring with bright colors of white, yellow and shades of grey giving movement to the space.

**TAMKEEN REALESTATE**  
Interior Design







---

The use of modern elegant interior for a real-estate office with the dominance of light colors with some touch of dark elements of wall background and furniture to create a balance. The curvy sofas with the plant gives uniqueness and spatial quality to the space.

---

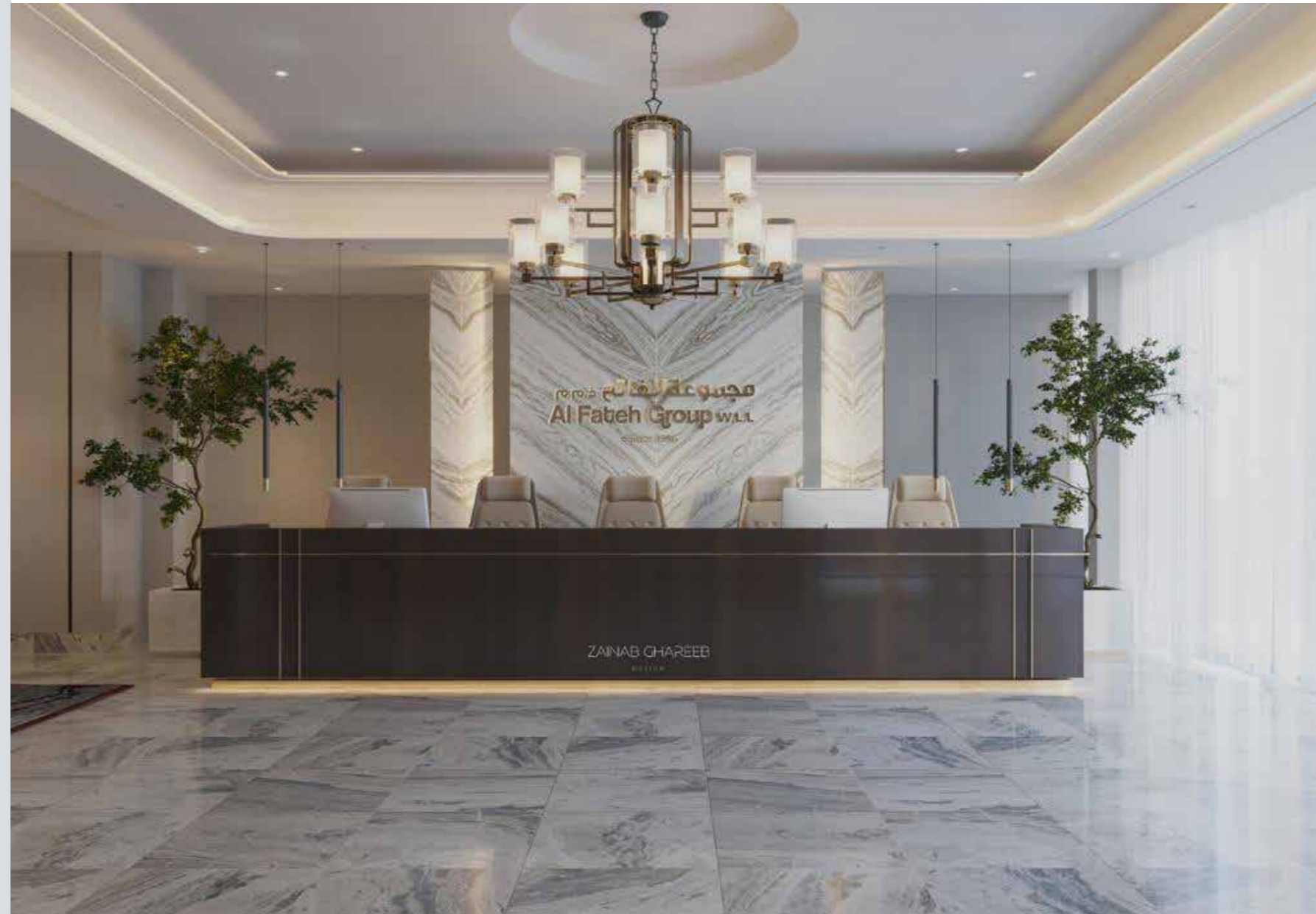
The office looks spacious and comfortable to work in with its modern style and cheerful colors. In addition, the meeting room is large and designed in a corporate executive style with wooden wall and decorative shelves in combination to a large window bringing natural light and life into the space.



## AL-FATEH GROUP

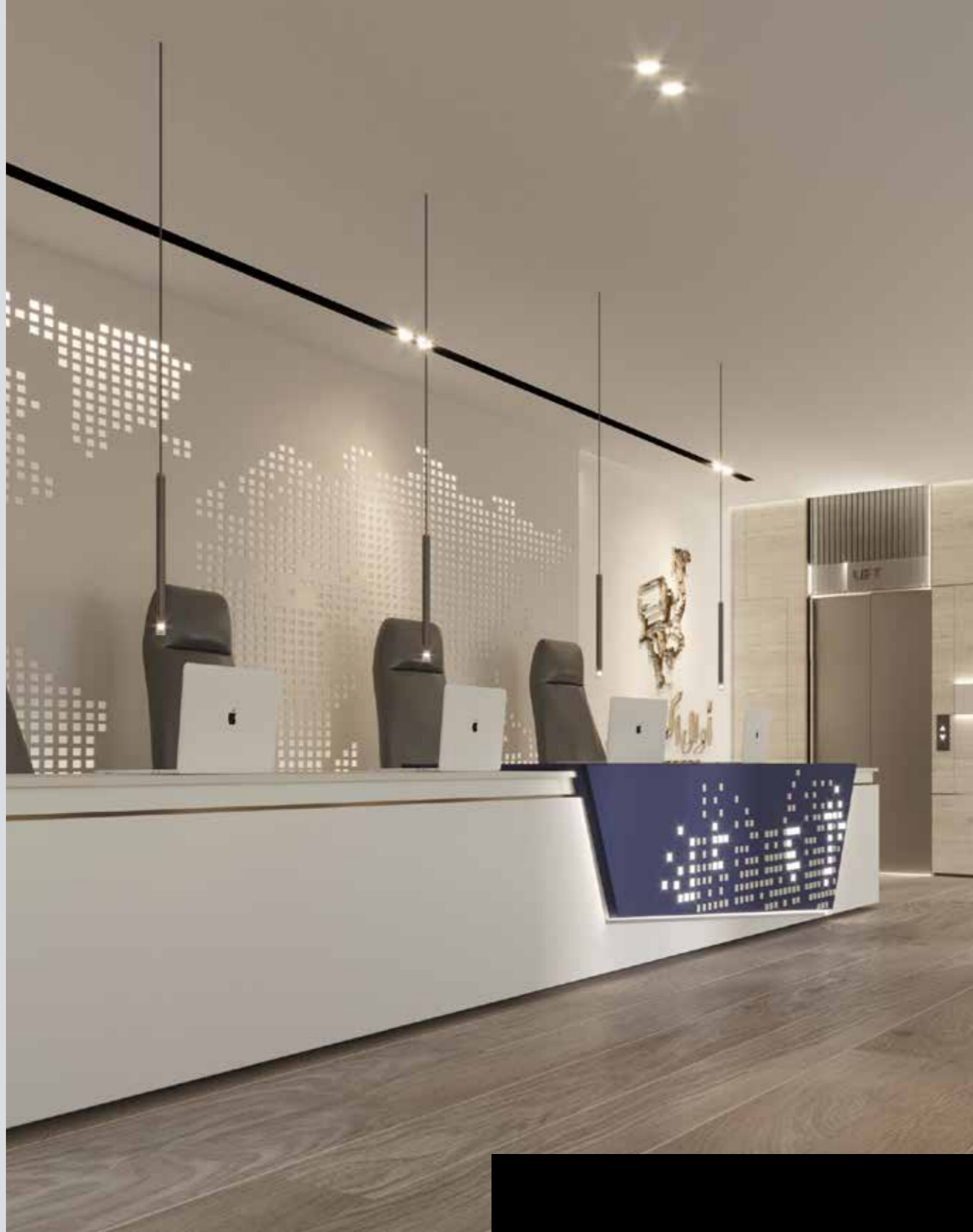
### Interior Design

The lobby is spacious and luxurious with a large desk for 5 seaters and large pots of plants on both sides. The light marble flooring finish and wall in contrast to the dark wooden desk gives balance to the space and makes the lobby more defined and emphasized. The natural light gives brightness and vividness to the space.



The workstation is full of productivity with light colors and natural light. Moreover, the lobby has a beautiful portrait of the king of Bahrain with an elegant waiting area.





## **AWAL EXPRESS**

---

### Interior Design

The theme of the design was inspired by the color palette of the company's logo consisting of light colors of gold and beige. This combination created a spacious and modern office with beautiful background with LED matrix lights.





## NATURAL VIBE

The logo of the company is emphasized in the entry. Natural vibe was given to the space by using wooden parquet flooring and earthy warm colors.



# N YOGA CENTER

Interior Design



A soothing yoga center merging BOHO and minimalist style with beautiful organic arch design to give a relaxing feeling to the users. The use of natural color scheme gives the space a calm and peaceful vibe. A large window overlooking a small outdoor space/garden gives the space natural vibe and life.





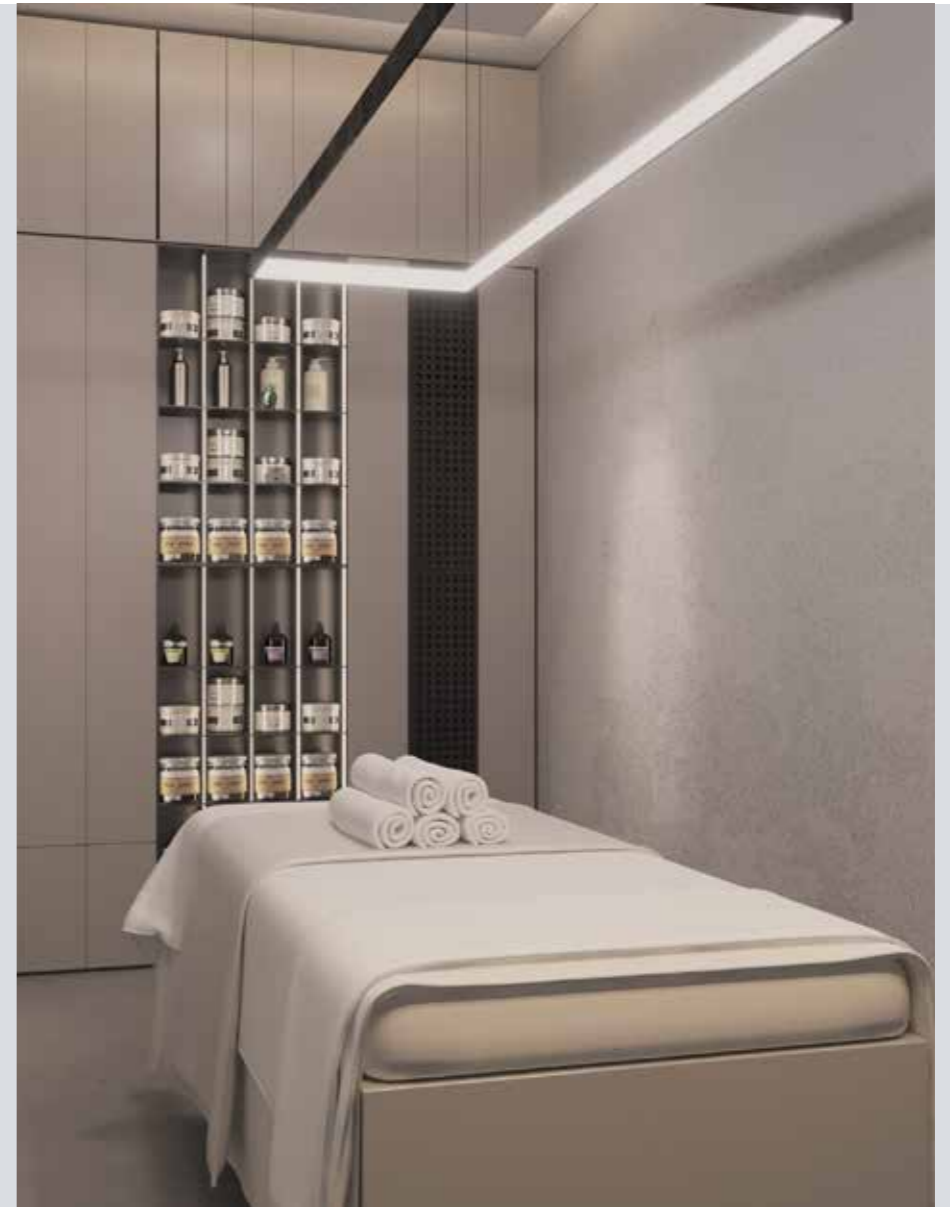
## GENTS SALON

---

### Interior Design

A modern men salon is beautifully providing all kind of facilities and services with a great interior design to make the users enjoy their time while using these services. The use of light color materials with wood and wall mirrors gives a spatial quality to the space





The use of artistic lighting fixtures and chandeliers with hidden lights added a beautiful touch to the space.



## KOUTURE CAKES

### Interior Design

A cake shop with arch design on the wall and quote to give an identity to the place. The use of light pastel colors mainly pink and white is used to make the space look creative and friendly.

The shop is simple with narrow layout with cake-making products sold on both sides of the wall and two central tables in the middle. The layout makes circulation easy and gives visual attention to the products displayed for easier marketing. The use of curvy lines inspired by the shapes of the cake makes the space look freer.





## THE PET NOOK Interior Design

A pet Grooming Van with beautiful pastel/neutral color scheme mainly pink in the inside with light wood effect and on the outside pink with light turquoise as the van paint (outside). These colors help make the pets calmer and more comfortable.

---

Moreover, the use of light colors and vertical panels makes the space look bigger. A circular frame was placed for pictures to be taken of the newly groomed pets. Wood was used to give the place a more organic feel.



## ACHBERHA SHOP

---

### Interior Design

Industrial vape shop with beautiful brick wall cladding in the interior and steel frame shelves to display and store the products. The steel mesh-like ceiling adds machine like vibe to the atmosphere. The concrete finish front desk is beautifully merged with the industrial look.



ZAINAB CHAREEB



The large logo is emphasized in the front desk with the company's name written in Arabic making the space personal. The use of reddish-brown brick with the grey-black color gives harmony and balance to the space with maintaining the industrial style.





A beautiful BOHO inspired interior giving the apartment a natural and calm feeling.

## ORCHID TOWER Interior Design



# ORCHID TOWER

## Interior Design

The use of touches of wood combined with warm natural color scheme mainly beige and brown helps to make the space look bigger and more intimate with calm natural vibe.







## JEEWAN VILLA

### Interior Design

Modern style guided the design of this house with pastel colors. Light colors were used for the floors and walls to make the space more spacious and calmer with giving focus to the furniture.

Elegant design staircase with white marble finish and hidden lights with addition to class railing, making it look clean and modern. The use of indoor plants gives the spaces a natural vibe.



## DURRAT AL\_MUHARRAQ

### Interior Design

A beautiful elegant Neo-classic style inspired the design of this villa. This style merges between the modern contemporary approach and the classic approach to create a balance between the past and present.



Neutral warm colors were used with a touch of some dark shades to give an intimate family space. The use of marble as the dominant flooring material with large windows to bring natural light into the spaces.





## BURI VILLA

### Architectural Design

Modern style with earthy color scheme created a beautiful natural feeling to the users of the villa. The use of wood and small tree gives this natural feel with addition to the use of light color furniture with an emphasis on one dark tone sofa and dark table legs to create a visual balance.

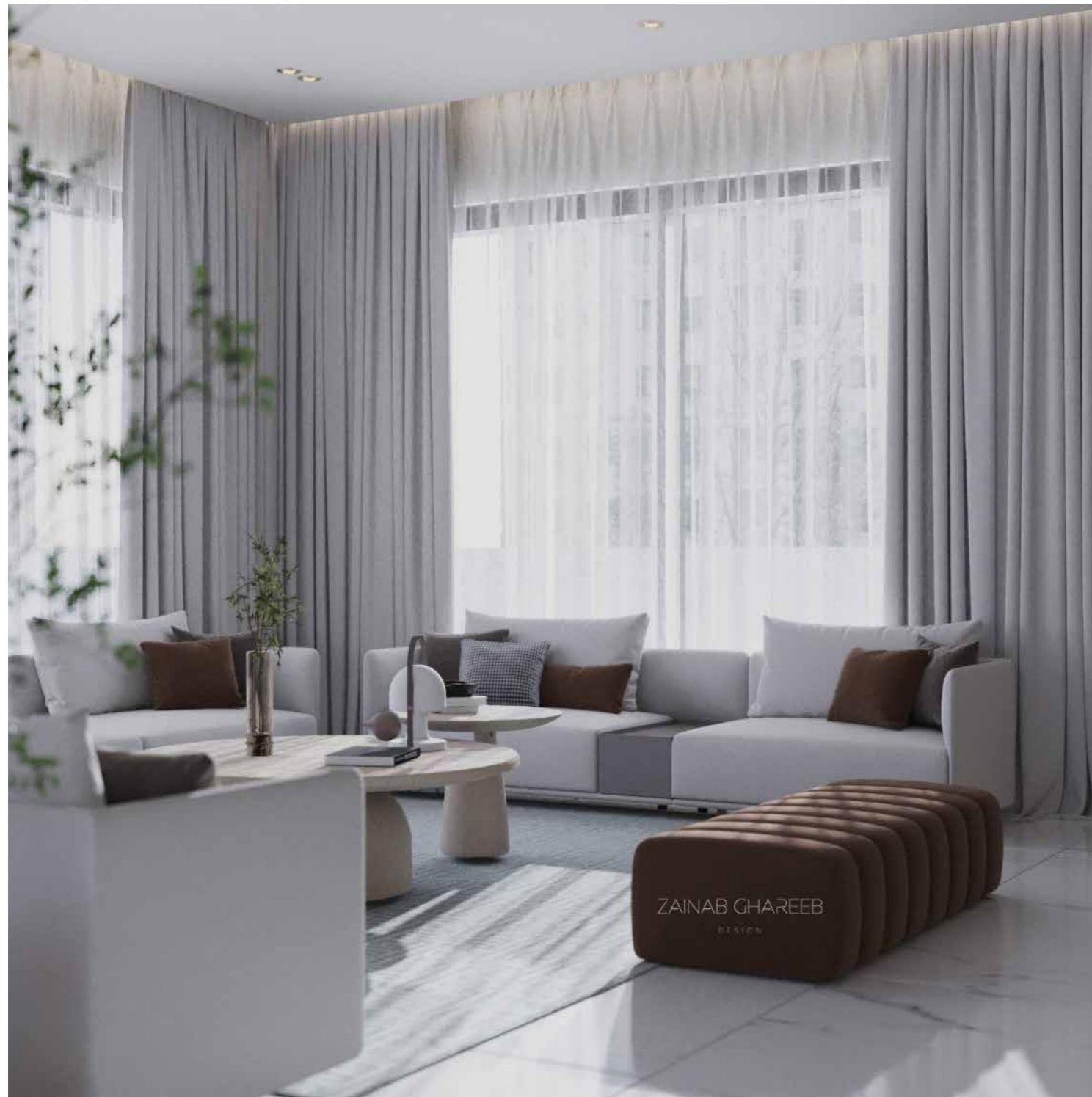


The balance of light and dark colors created harmony and appealing look to the space. The TV background is beautifully made with white and grey finish in contrast with the wooden panels. The stairs is also designed as simple floating steps giving modern sleek look.



# ALMAJID VILLA

## Interior Design

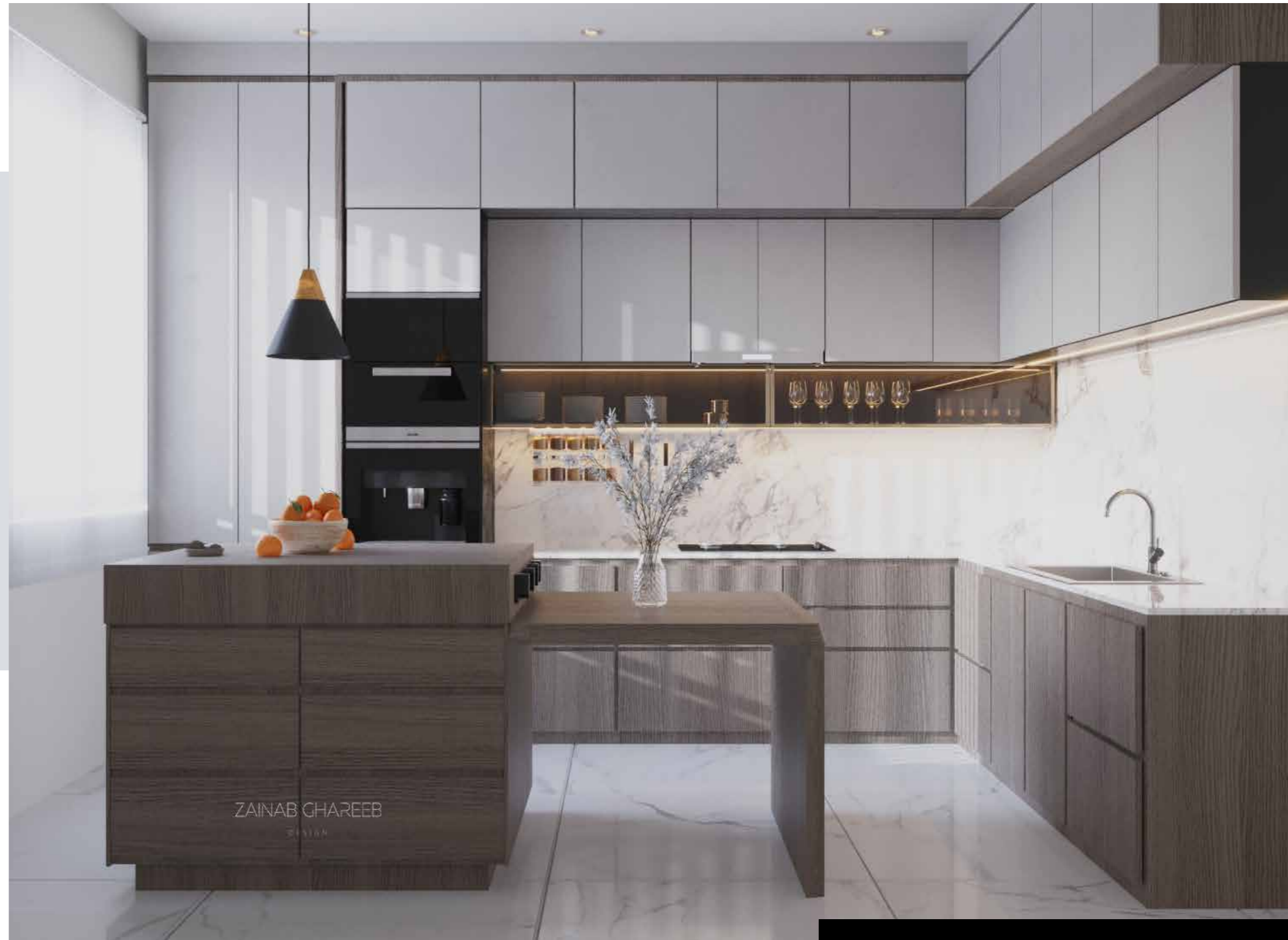


Minimalist modernism style was used to make the house look simpler and calm. The use of light color scheme of cold colors like light grey, white and light shades of brown. The staircase is beautifully designed with darker flooring and glass railing to make it seamless with the surrounding.





The use of darker tones of wood for the kitchen island and cabinet with light white marble finish gives the space a balance and aesthetic appealing look.





ZAINAB GHAREEB  
DESIGN

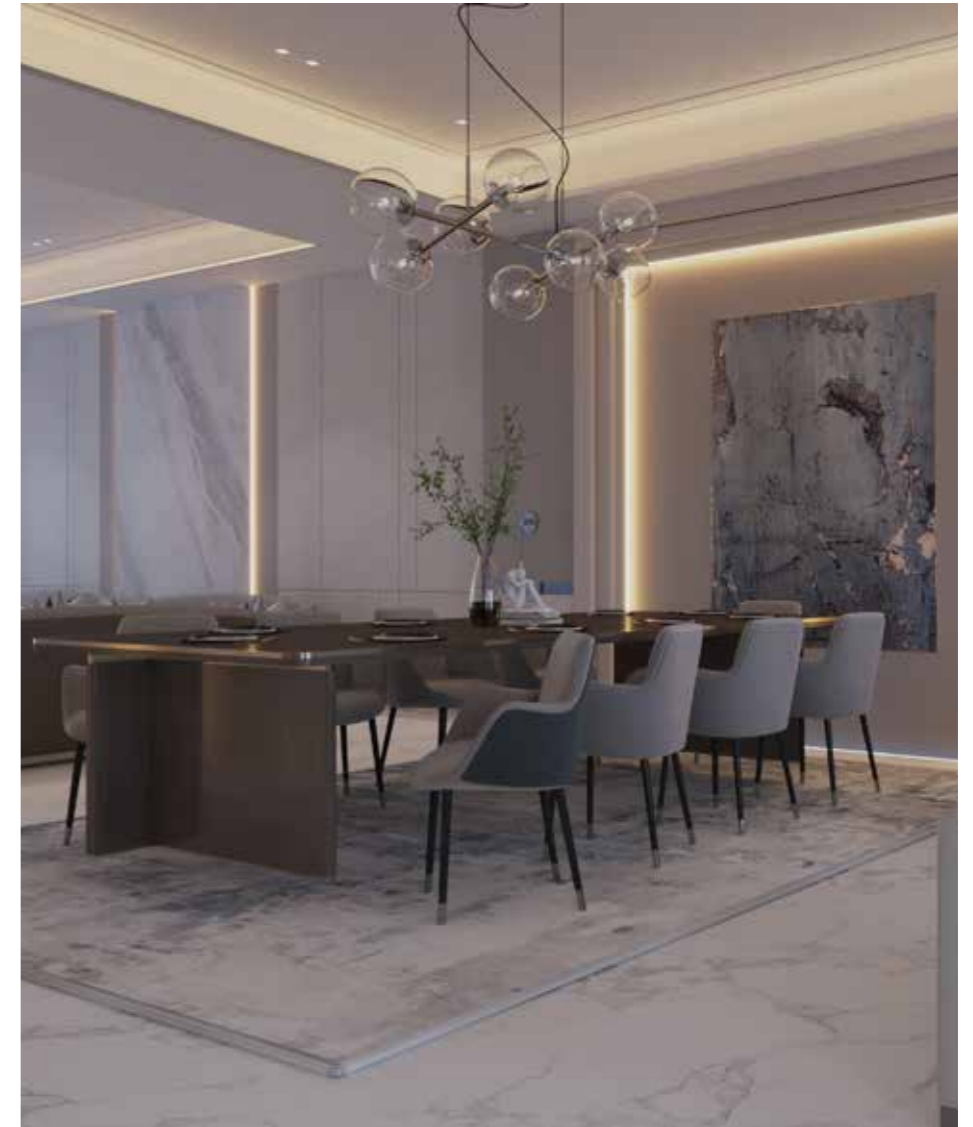
## AMWAJ VILLA

---

### Interior Design

Beautiful seafront villa with a neo-classical style overlooking an infinity pool. The interior of the house follows a light color scheme making it look spacious and luxury. The use of sculptures and plants gives the space an identity.

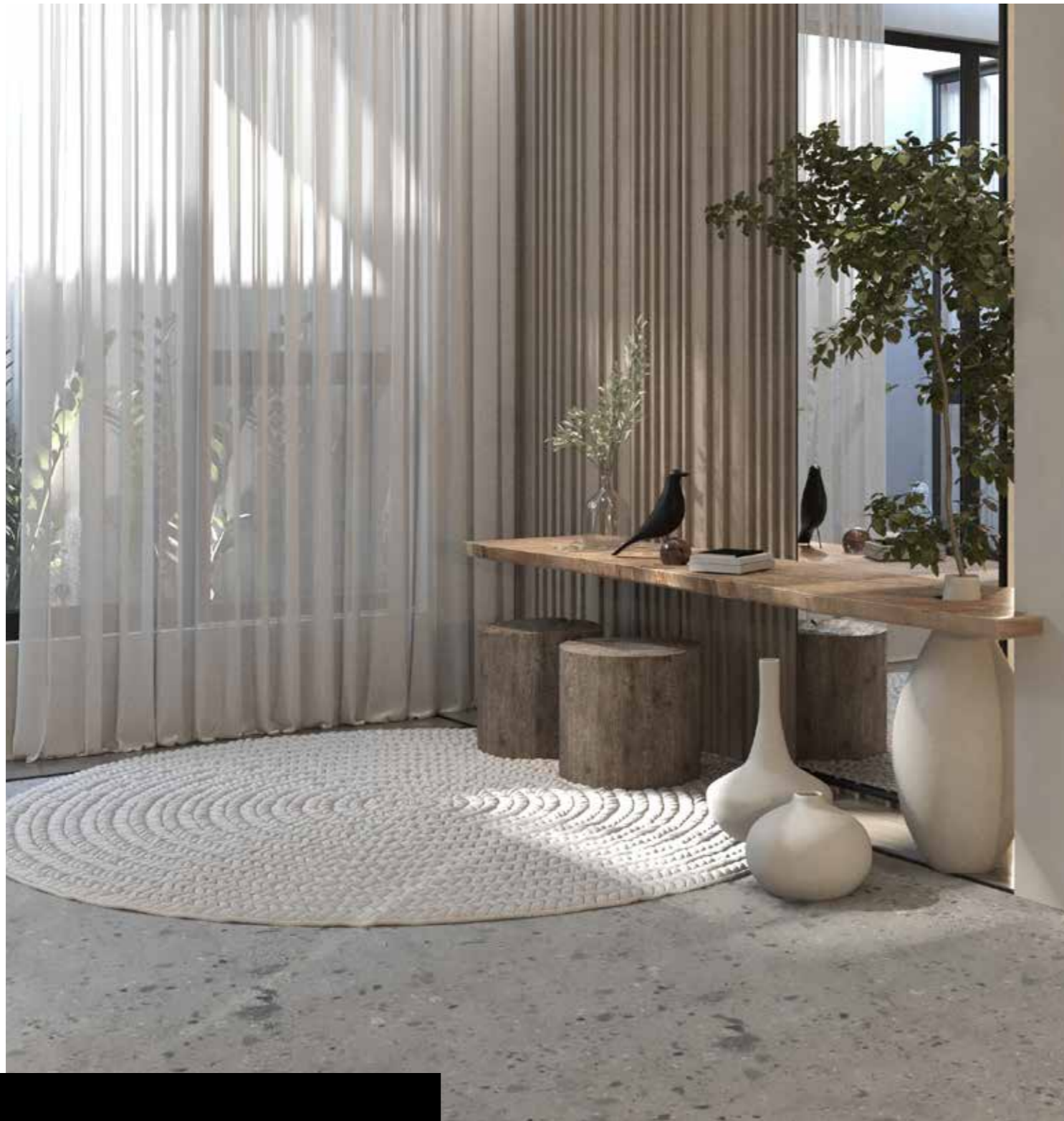
---



The marble is dominating the living and dining area with chandeliers defining both spaces.

# VILLA JERDAB

## Interior Design



## LOBBY

### Interior Design

Relaxing lobby with a contemporary tropical style full of natural colors and materials including concrete, wood, and greenery. In addition, the circular carpet adds beautiful touch to the space and also the clay pots adds artistic touch to the space.



## OFFICE

### Interior Design

The materials used are close to nature including wood and concrete. Other elements like shelves with decor, wall paintings, chandelier with strip lights on the wall and plants gives the space a beautiful vibe.

Elegant modern office with beautiful combination of colors creating a balance and productive environment especially with the large window bringing natural light to the space.







## AMWAJ VILLA

---

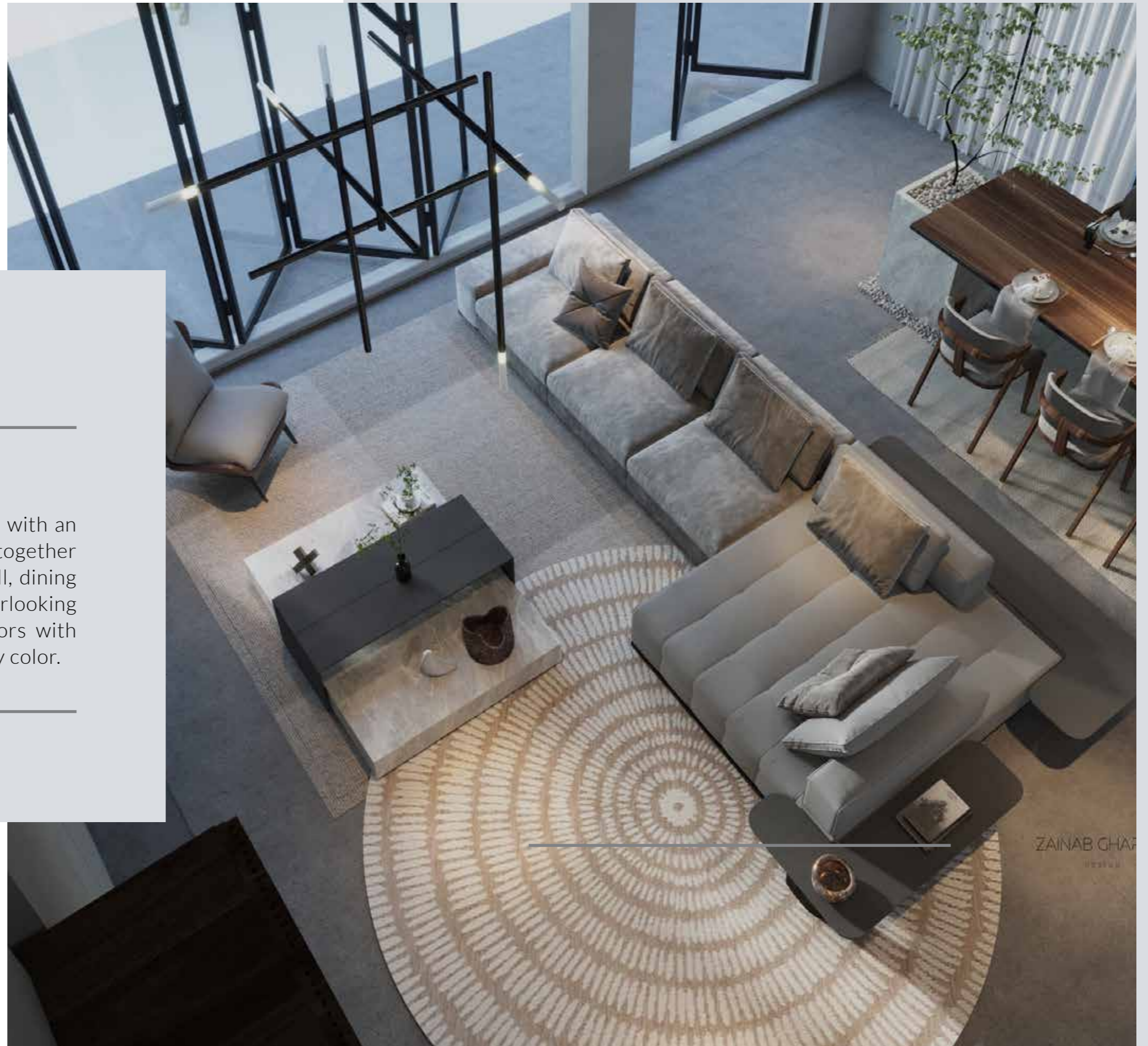
### Landscape Design

Beautiful open staircase with floating steps and hidden lights with louvred decorative partition to make connection and openness to the other spaces in the house. The use of small curvy sofa with small plants creates an enjoyable seating area utilizing the space under the stairs.

## HALL & OPEN KITCHEN

### Interior Design

A contemporary modern living space with an open concept plan merging all spaces together creating visual connection. Living hall, dining and an open kitchen are all overlooking each other composed of simple colors with dominance of different shades of grey color.



ZAINAB GHAFAR  
DESIGN



The chandelier defines the living space and creates intimacy. The balance of light color with few touches of dark wood created a balance. The plants added natural spirit to the space and the use of marble in some areas added elegance to the space.





## BEDROOM

---

### Interior Design

The space was inspired by a modern minimalist approach composed of light warm color scheme to make sleeping more relaxing and a peace of mind. The suspended light with wall hidden light gives beautiful relaxing spatial quality.



The use of different shades of brown and grey gives a beautiful balance in the space. The use of simple decorative potted plants also added spirit to the space.





## DRESSING ROOM

### Interior Design

---

The large mirror with hidden lights in combination with shelves and decorations makes the space look more personal and artistic. A beautiful floating wooden dressing table is used to place accessories and get yourself ready.

---



# BATHROOM

---

## Interior Design



A modern minimalist bathroom design with a large, glazed window bringing beautiful natural light into the space giving it life and making showering a joy to the user. The use of light colors to make it calmer and more spacious.



## SPANISH VILLA

---

### Interior Design

An Earthy Spanish style inspired the design of the villa's interior with earthy natural color scheme and organic curvy furniture. The use of wood and terrazzo gives a natural vibrant feel to the space.

## ROOMS INTERIOR

### DINING ROOM

The use of light colors and beautiful chandelier giving emphasis to the dining table.



### LIVING ROOM

Light color L-shape sofa with greyish wooden background and touches of brown bringing natural look to the space.



### LOBBY

The use of brownish wood and parquet flooring with carpet makes the lobby warm and intimate.





## ASKAR VILLA

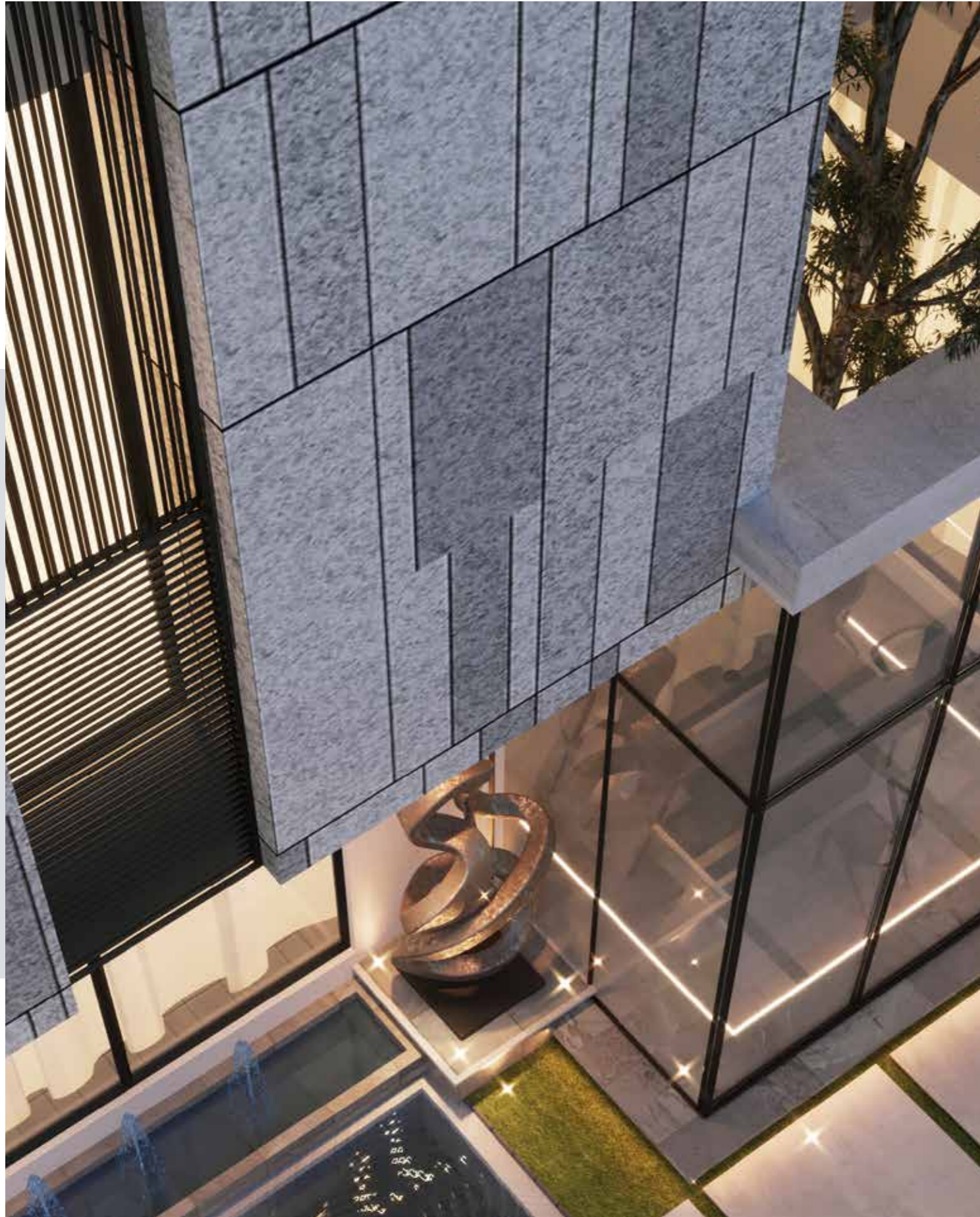
---

### Architectural Design

Modern elegant house in Askar, standing three storey high facing two streets with beautiful large, glazed windows bringing live and enough natural light to the spaces which will create a happier and healthier house.







Modern and simple off-white facade with grey touches to create harmony and balance. Spacious terrace giving indoor and outdoor relationship on the first floor. The user is welcomed nicely by beautiful landscape and three steps with hidden LED lights.



## BUHAIR VILLA

### Architectural Design

A beautiful seafront villa with large-glazed windows bringing the sea closer with enriching the space with life, natural light, and serenity. The villa follows a modern style with simple form design.

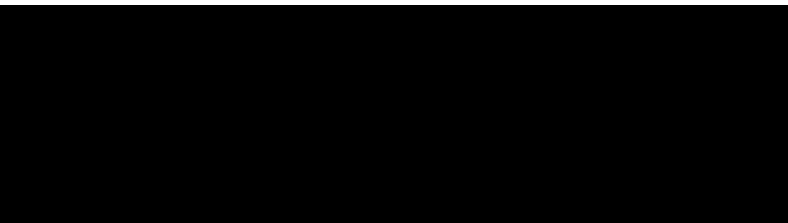




## TUBLI VILLA

### Architectural\ Landscape Design

A modern corner house with light colors of white and grey touches in the façade with windows overlooking beautiful landscape. The simplicity in design makes it elegant and calm.



Emphasis was given to the landscape design with gardens and outdoor seating area surrounding the house creating a beautiful lively indoor and outdoor relationship for the user making him enjoy the house to the fullest.

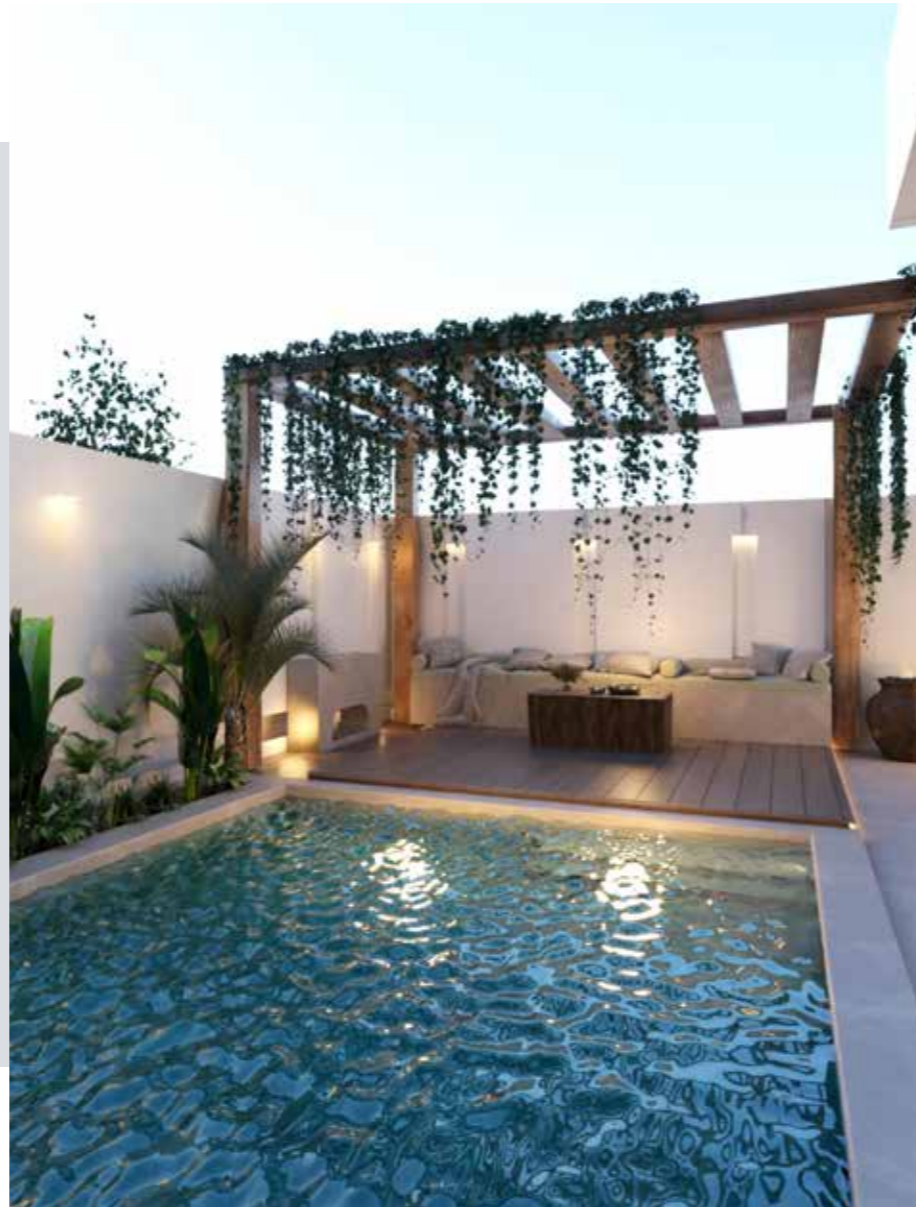




## MOH'D MAJEED VILLA

### Landscape Design

Natural touches of greenery and water were implemented to the villa in saar, bringing life and joy to the users. The entry of the house was decorated with beautiful pots of different plants and concrete tiles as a pathway giving you direct access to the pool area.



A Greek style inspired the design consisting of a beautiful pool with a semi-shaded wooden pergola and climbing plants. The use of warm neutral colors to makes the space calmer and simpler, with giving the focus to the greenery of the plants in relation to the bluish water of the pool.



## AMWAJ VILLA

---

### Landscape Design

The house is dominated by glass to create a beautiful indoor and outdoor relationship. The view from inside the house overlooks an infinity pool with a waterfall that is directly near the sea with its cozy shaded seating area to enjoy the magnificent view.

---





Modernism style is defined into the house using large glazed walls and balconies. The landscape is given importance to make the optimum joyful experience of the house.



Large outdoor dining set with its BBQ area is placed near the pool and sea to have a lovely family time. The use of stripped pergola and climbing plants reduces the heat and makes the outdoor space more enjoyable.

## ALBANNA LANDSCAPE

### Landscape Design



Simple landscape design was implemented to a beautiful corner villa with massive windows overlooking the garden that consists of beautiful shrubs and small trees with a seating area overlooking a decorated wall of plants.



The concrete tiles with beautiful lights creates a defined pathway to the entry of the house and to the seating area that also has a fireplace for a cozy vibe during the winter and for a BBQ dinner.





## SHAKHURA LANDSCAPE

---

### Landscape Design

A beautiful large organic pool with a semi-shaded seating and BBQ area for a lovely outdoor family time. The boundary wall is decorated with a waterfall fountain and recesses with hidden light to create a dynamic aesthetic look. The use of plants gave the place life and natural vibe.



Two wonderful seating areas overlooking the pool with one of them being open to the sky and palm trees, while the other is semi-shaded with large L-shape sofa, two arm chairs and a 6-seated dining with BBQ area.

