

UTT Gulf Corporation

Innovate. Actuate

UTT Gulf provides field-proven solutions for installation, maintenance, and optimization of critical turbomachinery assets

Middle East Presence - Company Coordinates



Name:	UTT Gulf Corporation WLL
Commercial Registration # :	101568-1
D&B D-U-N-S® Number:	56-146-1111
Registered Office:	Unit 13, Bldg: 1496, Road 2630, Block 626, Al Eker, Kingdom of Bahrain
Corporate Office:	World Trade Center, Manama, Kingdom of Bahrain

UTT India Private Ltd.

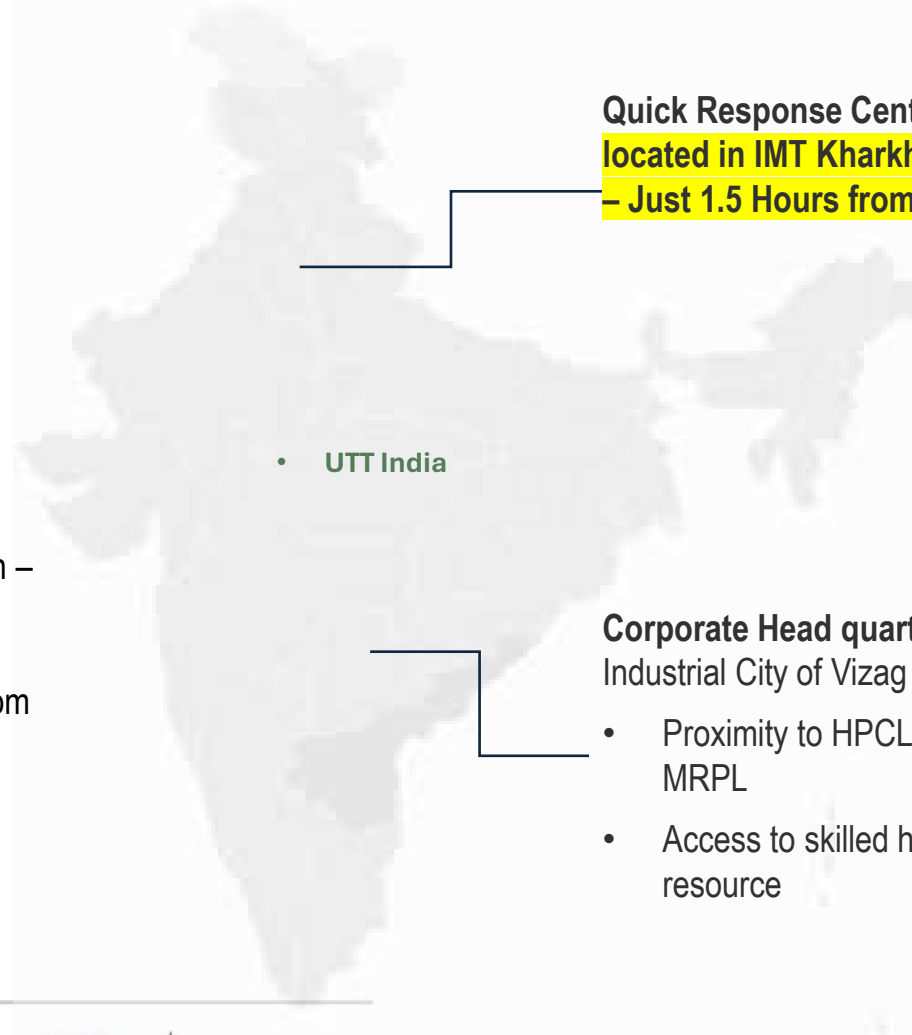
यू टी टी इंडिया प्राइवेट लिमिटेड

JSW
THE JAPAN STEEL WORKS, LTD. | Certified
Service Provider

UTT Gulf Corporation

Presence in INDIA

UTT India has its registered office in the industrial city of Vizag and a Quick Response Center and Machining Workshop in India.



Quick Response Center & Workshop –
located in IMT Kharkhoda, Near Sonipat
– Just 1.5 Hours from New Delhi Airport

Registered office:

GF1, Srilakshmi Nilayam, chandrampalayam,
madhurawada, Vishakhapatnam, Andhra Pradesh –
530048

Ph: +91 891 2958179 Fax: +91 891

Email: Imtiaz@uttindia.com Web: www.uttindia.com

Corporate Head quarters-

Industrial City of Vizag

- Proximity to HPCL, Haldia, MRPL
- Access to skilled human resource

GSTIN: 37AACCU7333H1Z7
CIN No.: U29304AP2020PTC116664
PAN No.: AACCU733H
TAN No.: VPMU00841B

UTT India Private Ltd.

यू टी टी इंडिया प्राइवेट लिमिटेड

JSW
THE JAPAN STEEL WORKS, LTD.

Certified
Service Provider

UTT Gulf Corporation



About Us

HISTORY

UTT Gulf Corporation was established primarily as a Business development & Technical Consultancy in Bahrain. We pride ourselves in providing local representation to reputed international OEMs primarily from Japan & Europe.

Owing to our rich history and association with the business landscape in Bahrain and GCC region, we are the partners of choice to assist our international principals in achieving access to upcoming projects with National and International Oil & Gas, Petrochemical, Power & Utilities projects. We provide active assistance to our clients in Plant overhauls, shutdown & Turnarounds, Manufacturing, Fabrication, Manpower, Equipment, and other resources.

With an enviable team of dedicated professionals, UTT has been able to script success stories for all its international partners and emerge as the preferred local partners for Bahrain & the GCC region.

About Us

UTT INDIA's MANDATE:

To expand our legacy and serve the growing demand in South Asia, we launched UTT India Private Limited, our Indian subsidiary, with a focus on delivering the same exceptional standards in the Indian petrochemical industry.

UTT India is strategically aligned with JSW and its expansive customer base, providing specialized support to meet the unique requirements of India's thriving petrochemical sector.

UTT India's operations focus on facilitating international OEMs' entry and success in India, offering expertise in project development, market insights, and supply chain management tailored to the petrochemical industry. By leveraging the technical knowledge and business acumen honed in Bahrain and the GCC, UTT India acts as a vital bridge between global OEMs and India's burgeoning opportunities in the petrochemical domain.

Together, UTT Gulf Corporation and UTT India Private Limited are committed to delivering unparalleled value to our clients, strengthening partnerships, and driving innovation in the petrochemical sector across diverse markets.

UTT India Private Ltd.

यू टी टी इंडिया प्राइवेट लिमिटेड

JSW
THE JAPAN STEEL WORKS, LTD. | Certified
Service Provider

UTT Gulf Corporation

Company Ethos

Vision



To be the pre-eminent provider of Technical Consultancy & Service support services to international original equipment manufacturers of Static & Rotary Plant Equipment.

Mission



We are in the business of providing international OEMs, consultancy services for sales channel creation for spare parts sales, local representation and support for fabrication, assembly, installation and after sales services.

Goals & Objectives

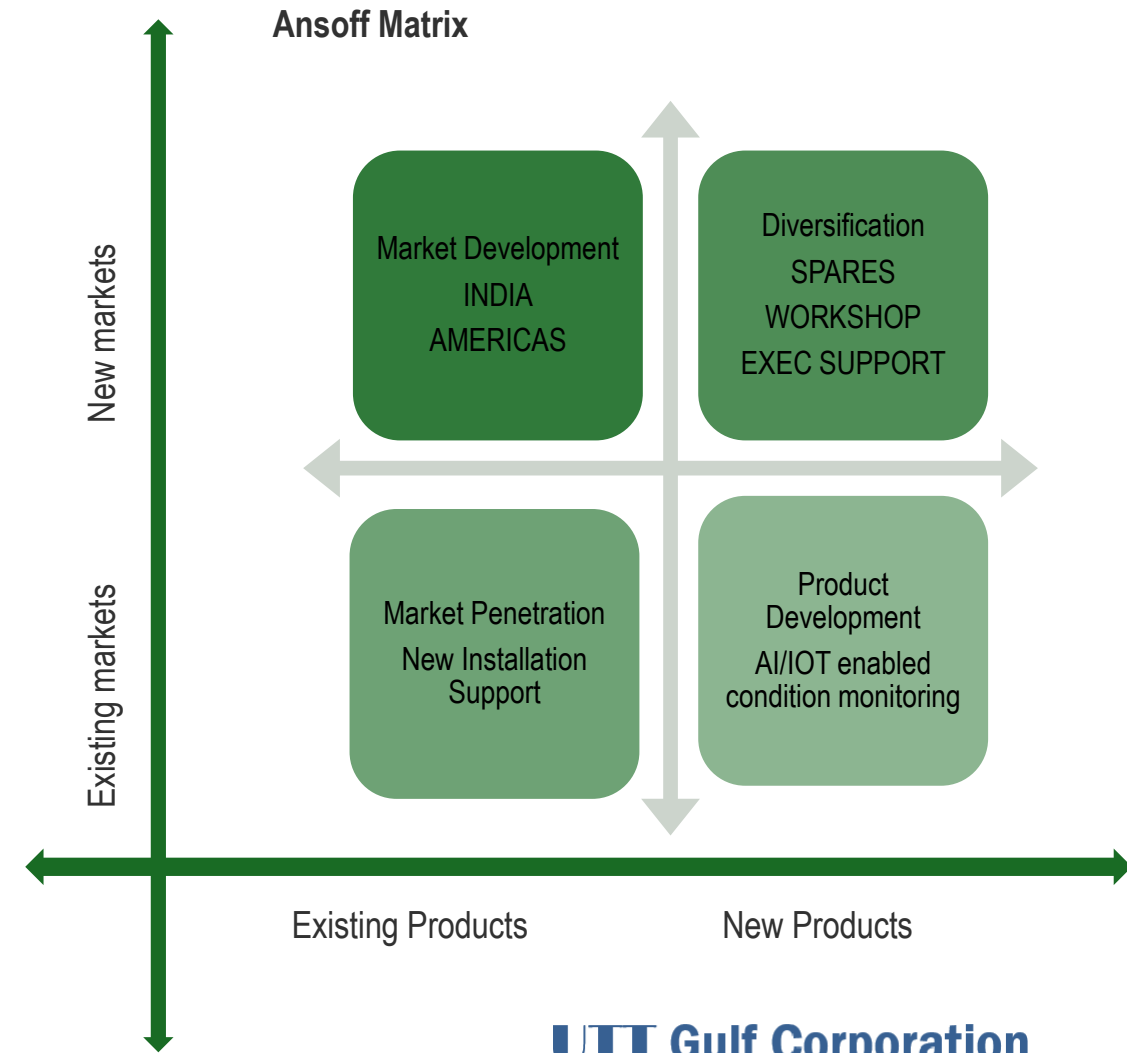
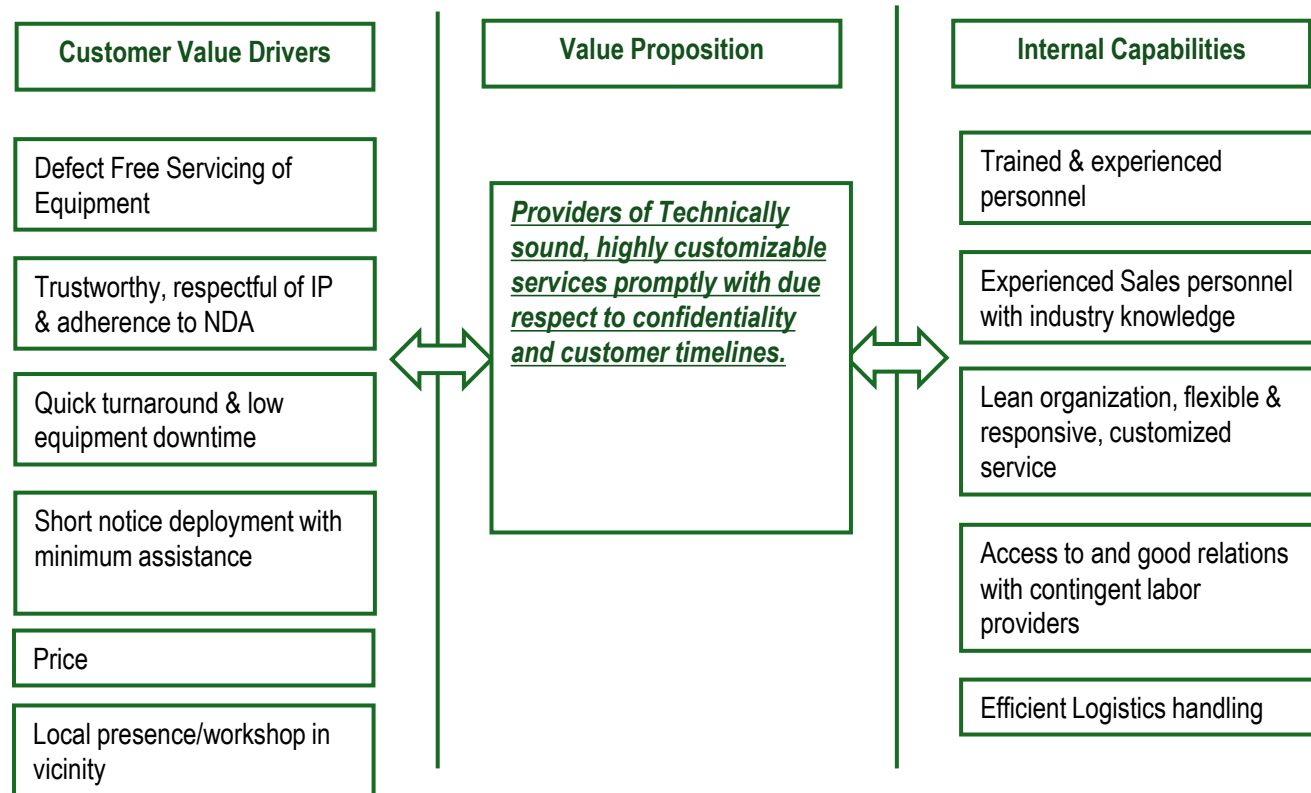


- To be the preferred consultants for client engagement and spare parts sales-order to cash management.
- To become reliable providers of OEM specific installation, repair, overhaul & turnaround, Asset health detection & analysis services to Plant owners.
- To emerge as a trusted Regional Business Unit for international OEMs.
- To develop a quick response center and maintain a pool of qualified subject matter experts to provide supervisory, early fault detection and emergency repair services to plant owners with existing client equipment installations.

Value & Mapping

Intrinsic capabilities that enable our current service portfolio and fuel our service expansion plans

Value Mapping



Corporate Organization

■ Chairman – Khalid Turk

Over 25 years of business development, project & assets management, business investments, in-country representation and market strategy experience within the Middle East. Scion of a notable business family in Bahrain with multiple business interests, owner of one of biggest mechanical workshops in Bahrain. Owner of one of the biggest fleet of logistics equipment in Bahrain.

■ Managing Director – Imtiaz Ahmed

Over 21 years of business development experience within the Middle East. Strong network of contacts among major project owners within GCC. Proven track record of improving Products & Services visibility & Revenue for leading manufacturers of rotating machinery.

■ Business Development Advisor – Takeshi Uemura

35+ years of Strategy Development and Implementation, Business Development, Corporate Transformation, Marketing initiatives & Client prospecting experience spanning, Japan, Far East, MENA & Europe. Former Regional head of Yokogawa Electric for the middle east responsible for establishing Yokogawa's footprint in Saudi Arabia, Bahrain, Oman and Qatar.

■ Technical Director – Raju Vegesna

Over 25 years of experience in planning, management & execution of turnarounds, shutdowns & major equipment overhauls for petrochemical & fertilizer industry. Ex-Chevron Saudi head of plant maintenance, Ex- National Fertilizers Corporation, Maintenance incharge.

■ Director – Projects – Rathish Muralidharan

Seasoned management professional with over 15 years' experience in Project & Portfolio Management participating in and leading major capital projects in the Oil & Energy and Petrochemicals industry. MBA – Strategy & Finance from the Rotman School of Management at the University of Toronto.

Business Units

UTT Gulf provides the complete range of OEM after sales services support as below.

Business Support Areas



Spare Parts Sales

- Sales Channel & Order Management:
- Long Lead Spares - Consignment & Logistics
- High Wear Spare Parts Stocking
- Inventory Management & Audit
- Back Office Mgmt – Finance, Accounting & Logistics



On-site Support

- OEM Approved Supervisory Services for:
- Routine caravan visits and asset health monitoring.
- Routine Maintenance & Scheduled Overhauls
- Emergency Shutdown Assistance
- New Installation Supervision



Quick Response Center

- OEM Certified Workshop for:
- Machining, Die plate grinding, Fabrication & Assembly
- High wear & emergency parts Manufacturing
- Captive facility exclusive to servicing only OEM customers.

On-Site Execution Support

Refinery & Captive Power Plants:

Steam Turbines:

OEM	Vendor Supervision	LSTK O/H	TTV & Control Valves O/H
MHI	Ok (AST Turbo)	OK	Ok
Elliott	OK	Ok	Ok
Nuovo Pignone	OK (Ex-BHEL / AST Turbo)	Ok	OK
Siemens	OK	OK	OK
Shin Nippon	OK	Ok	Ok

Gear Boxes: Major overhauling of gear boxes.

Note: UTT can mobilize an OEM consultant if awarded a lump sum turnkey contract including vendor supervision.

On-Site Execution Support

Compressor: Major overhauling including dry-gas seal replacement.

OEM	Vendor Supervision	LSTK O/H	Dry Gas Seal Replacement
MHI	Ok (AST Turbo)	OK	Ok
Elliott	OK	Ok	Ok
Nuovo Pignone	OK (Ex-BHEL / AST Turbo)	Ok	OK
Siemens	OK	OK	OK

Process Pumps:

OEM	Vendor Supervision	LSTK O/H
SHIN NIPPON	Ok	OK

On-Site Execution Support

UTT team has extensive experience in successfully managing complex turnarounds of different rotating equipment in petrochemical plants. On a lump-sum turnkey basis, UTT can handle the following equipment:

Polymer Plants

Extruders:

OEM	SV Deployment	Lump-sum	Remarks
JSW	OK	OK	
Coperion		OK	Can Handle with-out OEM Supervision
Kobelco		OK	Can Handle with-out OEM Supervision
Farrel Pommini		OK	Can Handle with-out OEM Supervision
Krauss Maffei		Ok	Can Handle with-out OEM Supervision

On-Site Execution Support

Gear Boxes

OEM	Extruder	ID/FD Fan	Agitator	Melt-Pump
ABEX	OK			
Renk	Ok			
Lufkin	Ok	OK		
Sumitomo			OK	OK
Kobelco	OK			

Note: Above jobs UTT can execute without OEM Supervision

On-Site Execution Support

Miscellaneous Rotary Equipment's

Equipment's	Make	Remarks
Rotary Feeders	Coperion, Zeppelin	
Agitators	Ekato, Zeppelin	
ID Fan & FD Fan	Howden	
Lobe Blowers	Tuthill, Howden	
Refrigerant Compressors	GE, Howden, Johnson Controls	
Pumps	All OEMs	
Reciprocating Compressors	Burckhardt, Nuovo-Pignone	
Conveyors	Chain Type	Bucket & Chain replacement

PROJECTS PORTFOLIO – MIDDLE EAST ASIA



Shutdown Maintenance Support in Bahrain for GPIC TA 2018

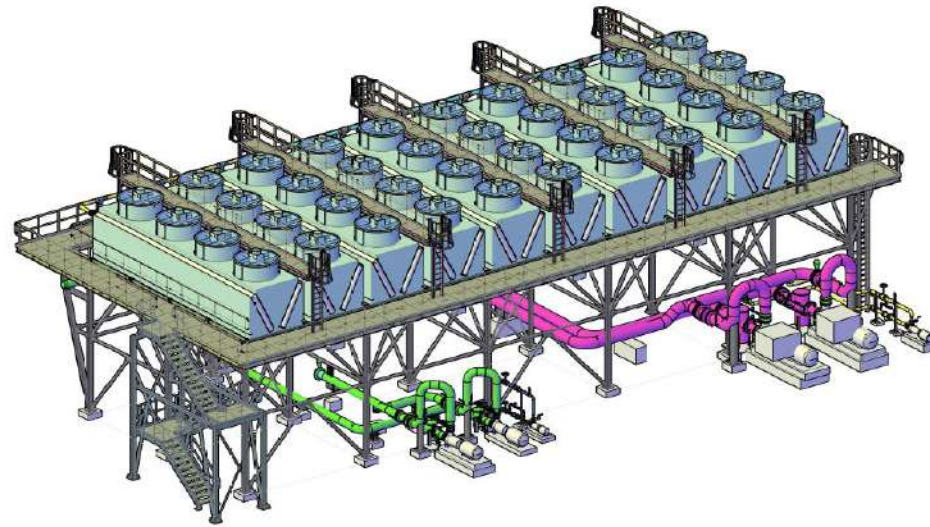


UTT Gulf Corporation W.L.L.

PROJECTS PORTFOLIO



GAMA POWER SYSTEMS



Fabrication & Assembly of Fin Fan Cooler modules & structure for B&W SPIG (GE-GAMA Power for Alba PS-5 Project)



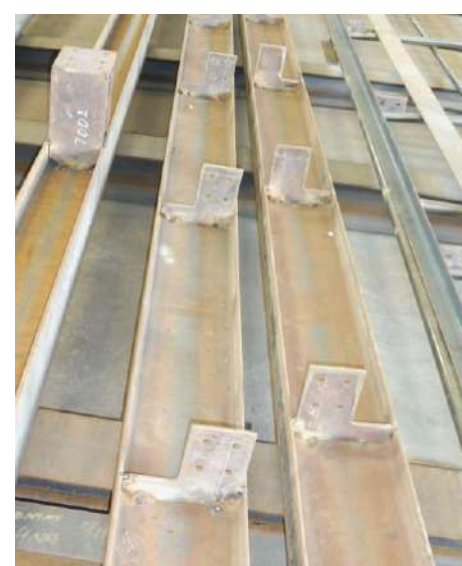
UTT Gulf Corporation W.L.L.

PROJECTS PORTFOLIO



GAMA POWER SYSTEMS

Local Fabrication & Assembly of Structural Components for GE-GAMA Power for Alba PS-5 Project



UTT Gulf Corporation W.L.L.

PROJECTS PORTFOLIO



GAMA POWER SYSTEMS

Drilling, Tapping & Machining Components for HYOSUNG Make Boiler Feed Water Pump



Field Removal and Hydrotesting of Flowserve Make Valves

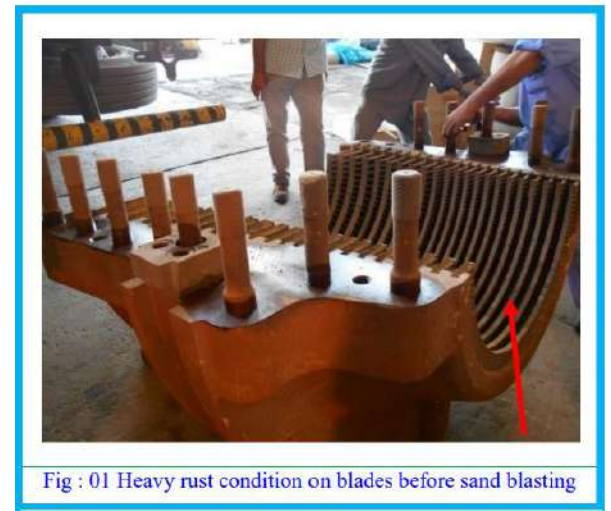


Fig : 01 Heavy rust condition on blades before sand blasting



EWA
هيئة الكهرباء والماء
Electricity & Water Authority

Remaining Life Assessment Study of Franco Tosi Turbine



Fig : 03 After sand blasting

UTT Gulf Corporation W.L.L.

PROJECTS PORTFOLIO

شرق
sharq



سافكو
safco

Remote Surge Tests for Mitsubishi Make Centrifugal Compressors

Fabrication of Nitrogen pressured Rotor Container for long term preservation



UTT Gulf Corporation W.L.L.

Lumpsum Turnkey Turnaround Execution

OEM Approved Supervision + Skilled Rotary Technician Crew Deployment



TA -2025 – Phasewise Execution
Phase I : 16 April to 10 May 2025
Phase II: 25 May to 10 June 2025

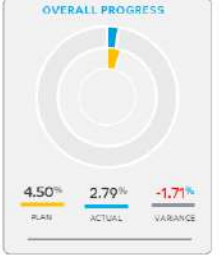


Mobilization Highlights

- OEM Approved Supervisors Mobilized : **4 Japanese (JSW) + 4 Indian (UTT India)**
- Rotary Equipment Specialist Crews Mobilized : **120 (UTT India)**
- All Hand tools, Rigging tools, Millwright tools and Specialised Laser Alignment Equipment
- Morning & Night 2- shift operations
- On Time Completion & Appreciation from Client

PROGRESS UPDATES

DATE: 17-Apr-25, 19:00 PM



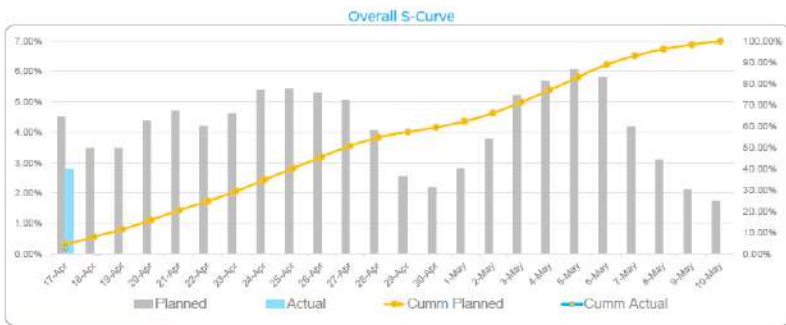
WEATHER TODAY
 33 / 26 C
 WIND: 25 KM/H
 RAIN PROBABILITY: 0%

WEATHER TOMORROW
 33 / 23 C
 WIND: 24 KM/H
 RAIN PROBABILITY: 0%

EHS HIGHLIGHTS
 • Maintain proper housekeeping at end of every shift.

EHS SLOGAN
 • Our Goal—Zero Harm

PP UNIT	LLDPE UNIT	HOPE LINE #1	HOPE LINE #2
Cum P/L: 5.63% Cum Act: 3.88% Variance: -1.75%	Cum P/L: 5.63% Cum Act: 3.02% Variance: -2.61%	Cum P/L: 3.42% Cum Act: 1.05% Variance: -2.37%	Cum P/L: 3.42% Cum Act: 3.25% Variance: -0.14%
PLAN START: 16-Apr-06:00 ACT START: 16-Apr-06:00 PLAN FINISH: 10-May-2025 ACT FINISH: 10-May-2025	PLAN START: 17-Apr-06:00 ACT START: 17-Apr-06:00 PLAN FINISH: 10-May-2025 ACT FINISH: 10-May-2025	PLAN START: 17-Apr-06:00 ACT START: 17-Apr-06:00 PLAN FINISH: 10-May-2025 ACT FINISH: 10-May-2025	PLAN START: 17-Apr-06:00 ACT START: 17-Apr-06:00 PLAN FINISH: 10-May-2025 ACT FINISH: 10-May-2025



MAJOR HIGHLIGHTS

Maintenance Activities:

PP UNIT:

- Decoupling of gas - separate drive gear assembly.
- GP GR - Motor decoupling. Oil Pipelines removed & BRG clearance checked.
- Cut gear removal in progress.
- Gas cut top casing bolts removal in progress.

LLDPE:

- Universal joint removed.
- Decoupling of gas to Thrust box completed.
- GP GR Decoupling and Lube Oil lines removed. & Bearing clearance measured has been completed.

MAJOR HIGHLIGHTS

Maintenance Activities:

HOPE LINE #1:

- Universal joint removed.
- GP to Thrust box decoupling completed.
- Cut flange & die holder removed.
- Gas cut to motor decoupling completed.
- Bearing clearance. Top casing bolts removal in progress.

HOPE LINE #2:

- Permit received at 5:00 PM.
- Die flange bolts removed and ready for removal.
- GPGR Universal joint dropped.
- Gas to Motor decoupling in progress.
- Gas to separate drive gear - decoupling in progress.

Lumpsum Turnkey Turnaround Execution

Daily Reporting Philosophy

Activity ID	Activity Name	BL Project Start	BL Project Finish	Activity % Complete
HPL EXTRUDER SHUTDOWN 2025				
HPL PP UNIT		26-Apr-25 18:00	10-May-25 19:00	
MAINTENANCE ACTIVITIES				
SCREW ASSEMBLY		26-Apr-25 18:00	28-Apr-25 18:00	
HPL-SA-1030	Screw measurement & Cylinder Measurement	26-Apr-25 18:00	28-Apr-25 18:00	70%
MAIN GEAR REDUCER				
HPL-MGR-1190	Main Motor & main GR alignment	08-May-25 13:00	10-May-25 19:00	0%
HPL-MGR-1200	Install Desch coupling	09-May-25 18:00	10-May-25 19:00	0%
GEAR PUMP GEAR REDUCER				
HPL-GPGR-1100	GP GR & Motor alignment	06-May-25 08:00	07-May-25 09:00	0%
STARTING GEAR UNIT				
HPL-SG-1050	Final Boxup	27-Apr-25 09:00	28-Apr-25 10:00	0%
CUTTER UNIT				
HPL-CU-1010	Assembly of Cutter unit	02-May-25 17:00	06-May-25 08:00	90%
HPL LLDPE UNIT				
MAINTENANCE ACTIVITIES				
SCREW ASSEMBLY		20-Apr-25 10:00	26-Apr-25 18:00	
HPL-LDPE-SA-1020	Screw & Cylinder Cleaning	20-Apr-25 10:00	26-Apr-25 18:00	90%
HPL-LDPE-SA-1030	Screw measurement & Cylinder Measurement	26-Apr-25 18:00	28-Apr-25 18:00	0%
MAIN GEAR REDUCER				
HPL-MGR-1400	Main Motor & main GR alignment	08-May-25 17:00	09-May-25 18:00	0%
HPL-MGR-1410	Install Desch coupling	09-May-25 18:00	10-May-25 19:00	0%

PROGRESS UPDATES

DATE: 7-May-25, 19:00 PM



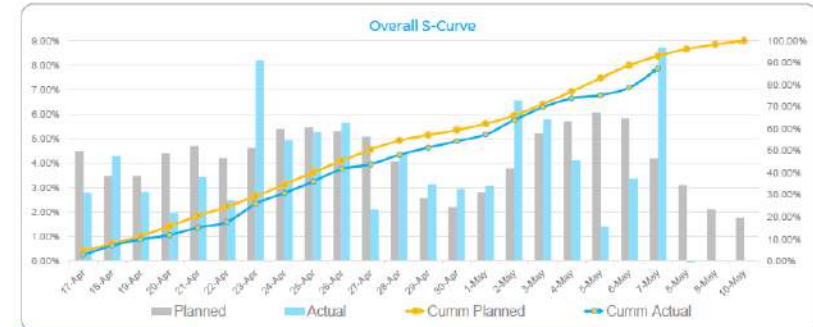
WEATHER TODAY
 35 / 26 C
 WIND: 19 KM/H
 RAIN PROBABILITY: 0%

WEATHER TOMORROW
 35 / 28 C
 WIND: 25 KM/H
 RAIN PROBABILITY: 0%

EHS HIGHLIGHTS
 • Maintain proper housekeeping at end of every shift.

EHS SLOGAN
 • Our Goal—Zero Harm

PP UNIT	LLDPE UNIT	HOPE LINE #1	HOPE LINE #2
Cum P/L: 96.30% Cum Act: 93.21% Variance: -2.79%	Cum P/L: 95.67% Cum Act: 88.14% Variance: -7.89%	Cum P/L: 90.05% Cum Act: 84.64% Variance: -5.55%	Cum P/L: 90.30% Cum Act: 84.22% Variance: -6.78%
PLAN START: 16-Apr-06:00 ACT START: 16-Apr-06:00 PLAN FINISH: 10-May-2025 ACT FINISH: 10-May-2025	PLAN START: 17-Apr-06:00 ACT START: 17-Apr-06:00 PLAN FINISH: 10-May-2025 ACT FINISH: 10-May-2025	PLAN START: 17-Apr-06:00 ACT START: 17-Apr-06:00 PLAN FINISH: 10-May-2025 ACT FINISH: 10-May-2025	PLAN START: 17-Apr-06:00 ACT START: 17-Apr-06:00 PLAN FINISH: 10-May-2025 ACT FINISH: 10-May-2025



MAJOR HIGHLIGHTS

Maintenance Activities:

PP UNIT:

- Cylinder measurement completed.
- Desch coupling dismantling completed.
- Cutter unit disassembly in progress.
- Mixer GR lube oil connection & end cover installation completed.

LLDPE UNIT:

- Thrust box assembly with Coupling hubs installation completed.
- Gas seals installation in progress.
- Cutter unit assembly in progress.
- Desch coupling assembly in progress.

MAJOR HIGHLIGHTS

Maintenance Activities:

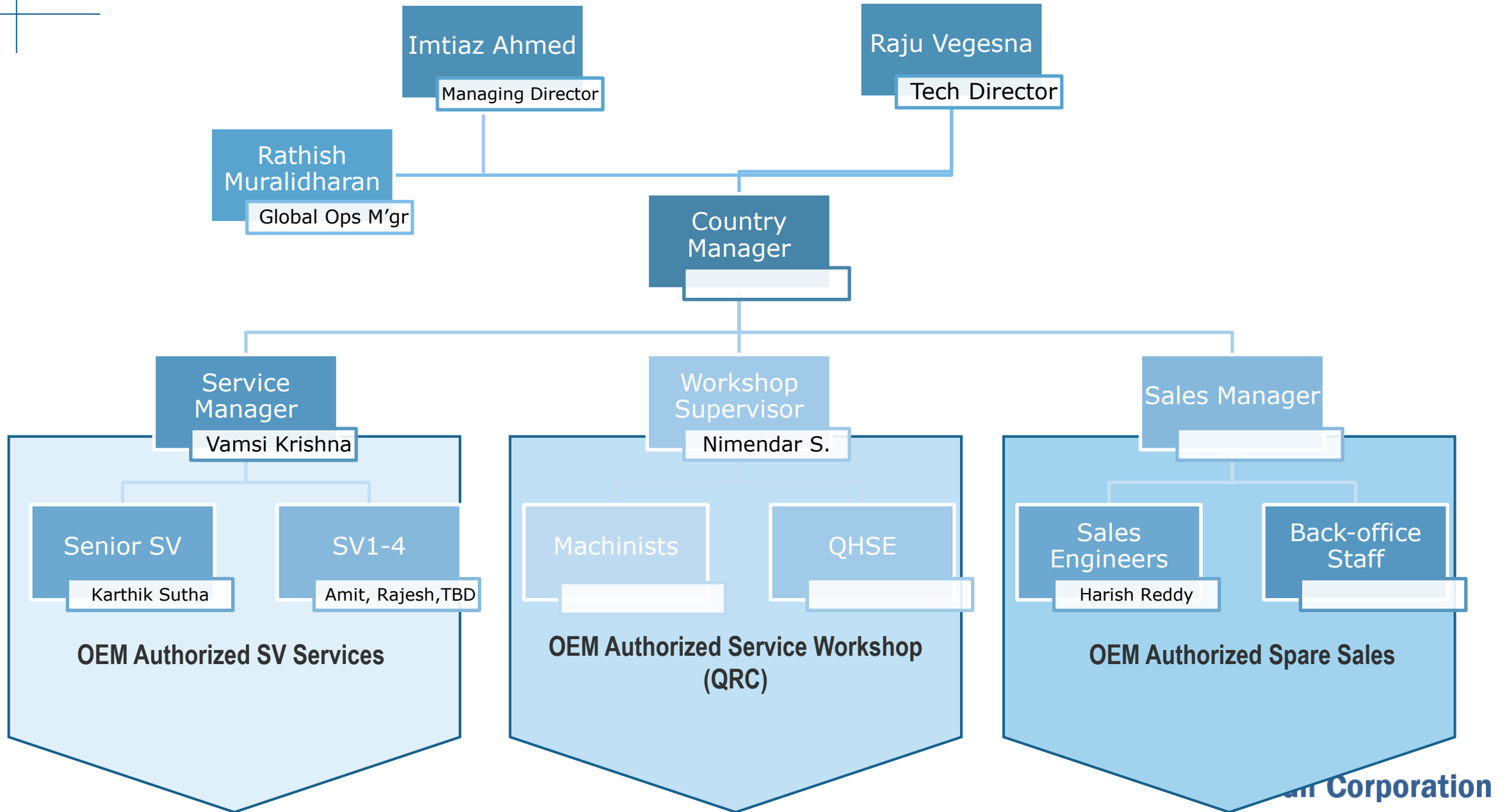
HOPE LINE #1 UNIT:

- GP carriage pulled out for 25mm correction.
- Divertor valve to cylinder - GP carriage 3 no 2 bolts found broken, replacing in progress.
- Hydraulic slot cylinder installation in progress.
- Cleaning of screw & cylinder in progress, measurement in progress.

HOPE LINE #2 UNIT:

- GP carriage pulled out for 25mm correction.
- Divertor valve to cylinder - GP carriage 3 no 2 bolts found broken, replacing in progress.
- Hydraulic slot cylinder installation completed.
- Cleaning of screw & cylinder in progress, measurement in progress.

Service Organization Chart



PROJECTS PORTFOLIO

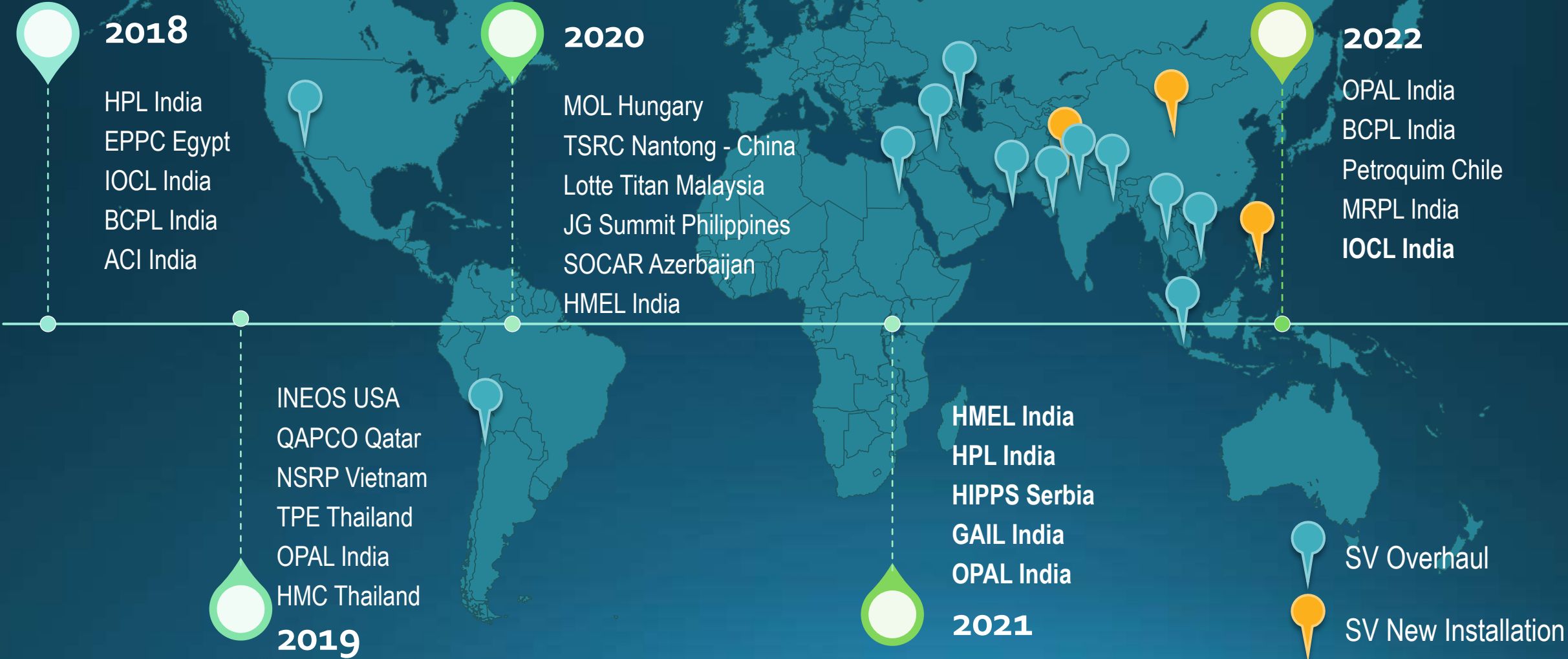


SV/Engineer Services for Overhaul & New Installation of Extruders (Via JSW & Direct)



Services

Service Coverage Map..



Service Coverage Map..



Russian Clients Served

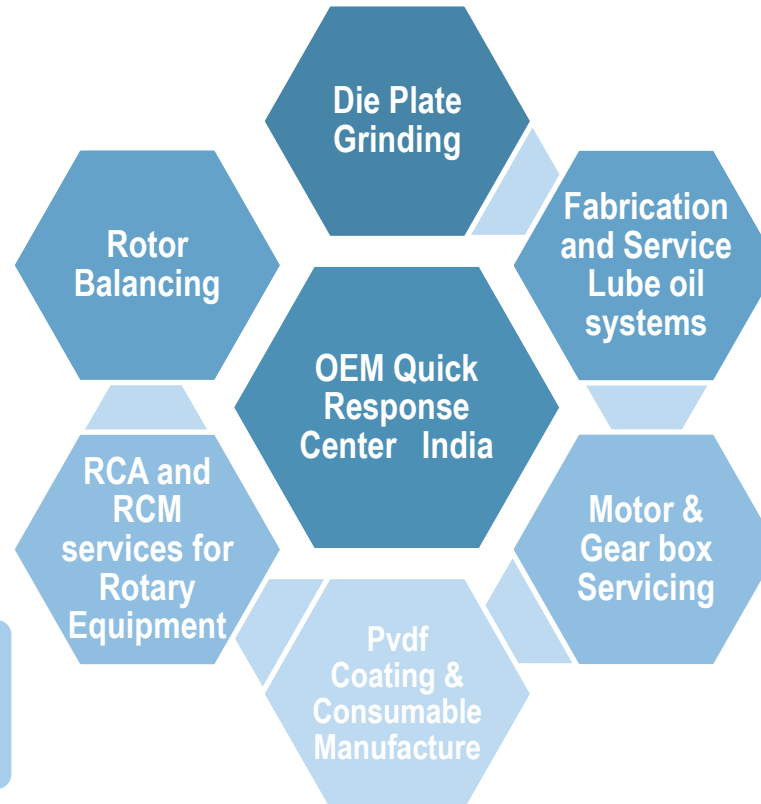
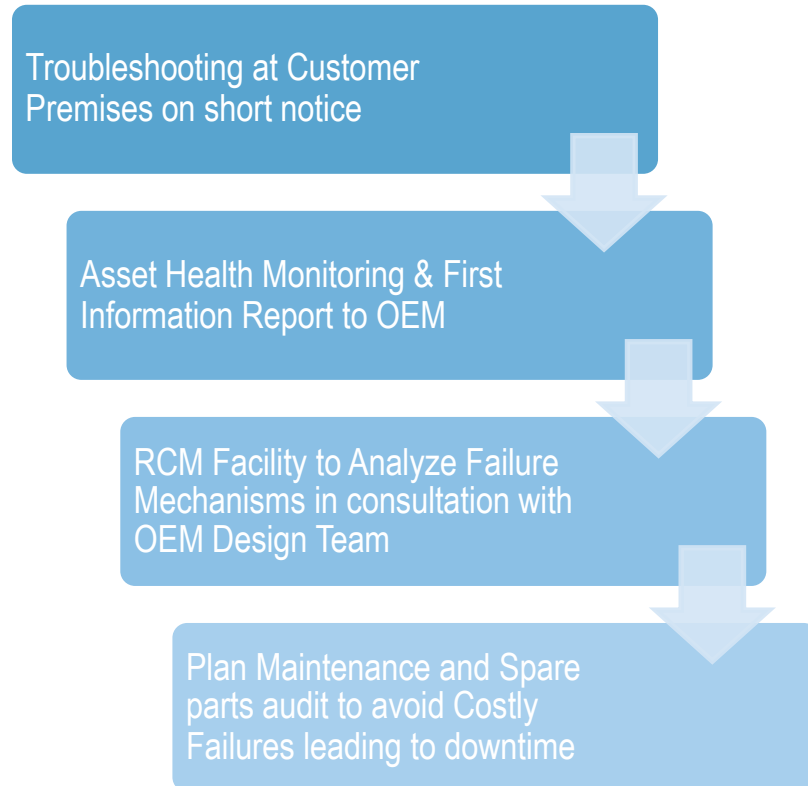


Sno.	Client Name	Plant	Location	Equipment Type	OEM	Model	Brief Description	Duration	Start Date	End Date
1	SIBUR /NPO Hermes	Kazanorgsintez	Kazan, Russia	Polyolefin Extruder	Japan Steel Works Ltd.	CIM-360PII	Overhauling of Mixer Gear Reducer & Gear Pump Gear Reducer (Ishibashi Make)	16	18-Sep-25	04-Oct-25
2	Baltic Chemical/PESCO Energy	Baltic Chemical Complex	Ust Luga, Kingisepp, Russia	Polyolefin Extruder	Japan Steel Works Ltd.	CIM-510	New Installation, pre-commissioning and commissioning of Polyethylene extrusion lines - 6 Nos.	Ongoing	14-May-25	Ongoing
3	Baltic Chemical/PESCO Energy	Baltic Chemical Complex	Ust Luga, Kingisepp, Russia	Ethylen Cracker Unit Compressor Packages	Mitsubishi Heavy Industries Compressors Division	CGC,PRC,BRC, H2C	New Installation, pre-commissioning and commissioning of turbine driven compressor pairs 7 Nos..	Under bidding	01-Mar-26	Under bidding
4	SIBUR /NPO Hermes	Tomskneftekhim	Tomsk, Russia	Polyolefin Extruder	Japan Steel Works Ltd.	P-460	Inspection & Overhaul	Under discussion	Jun-26	Under discussion

Quick Response Center – Capabilities

UTT India serves as OEM eyes on the ground, deploying at short notice, providing first information reports and supporting end customer with support based on OEM advice.

What is the role of a Quick Response Center (QRC)?



Organization & Operational Overview

OEM Staff Stationed at QRC

- Direct Reports to OEM Sales & Service Department
- Localized Expertise and Knowhow of maintenance & procurement patterns of end user

• Maintain Dedicated Team of Rotary Eqpt Technicians with complete tooling

- Routine Maintenance & Cleaning works (hydro-jetting, chemical cleaning)
- Quick deployment to plant for emergency shutdowns

Reliability Centered Maintenance Facility

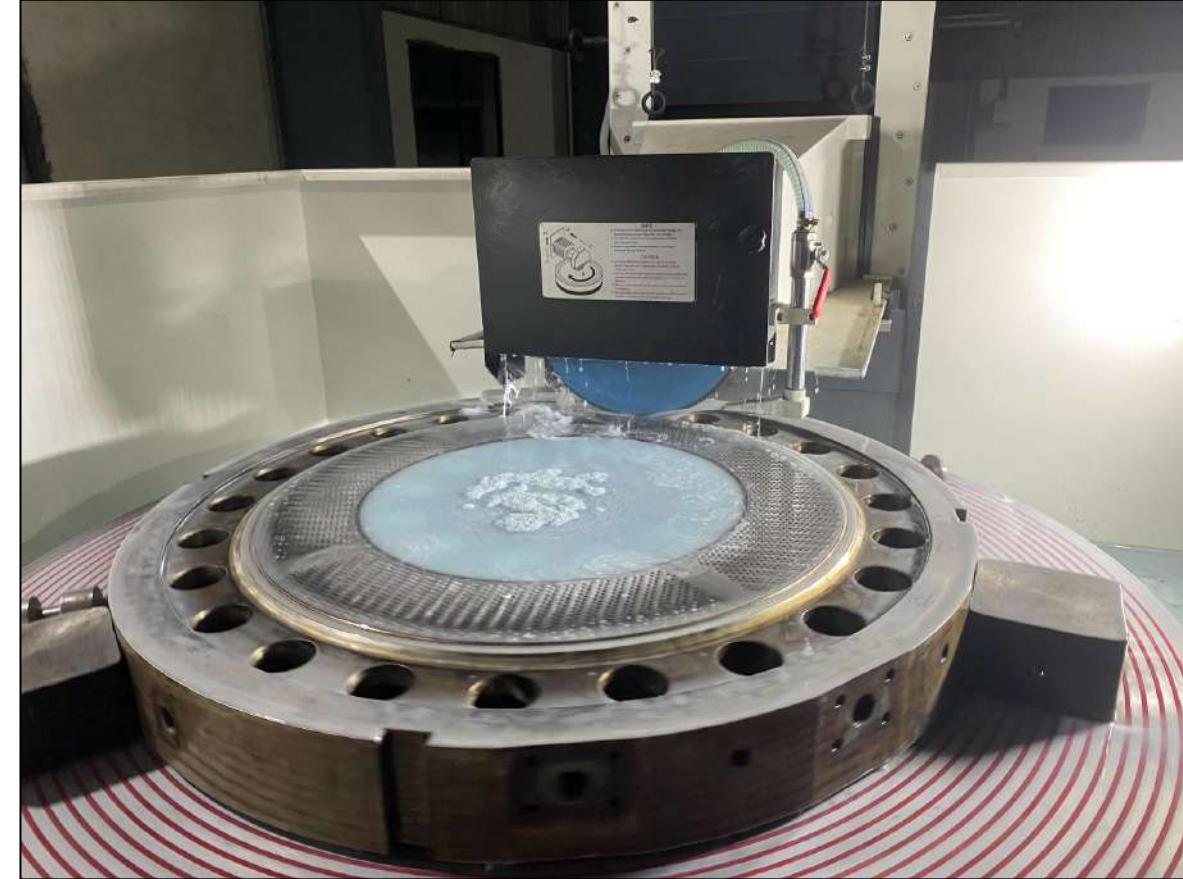
- Root Cause Analysis & Remedial Action
- Tailor-made solutions & customizations at proximity

Quick Response Center (Workshop Facility)

Surface Grinding Machine

Description	UOM	Size
Working Surface of the Table (Ø)	mm	1600
Max. Job size that can be Ground (Ø)	mm	1600
Max. Cross Traverse	mm	950
Max. Spindle Centre from Table Surface	mm	750
Max. Job height with new wheel on Magnetic chuck	mm	450
Max. weight carrying capacity of the Table	Kgs.	2500
Dimensions of machine	L x W x H – mm	6200 x 5200 x 2800

This state of art automated CNC grinding machine can handle the biggest diameter of JSW make DIE PLATE in operation.



Quick Response Center (Workshop Facility)

Radial Drilling Machine



Drilling Capacity	40 mm
Spindle Travel	220 mm
Drilling Radius	440 - 895 mm
column to Spindle distance	310- 820 mm
Drill head travel	450 mm
spindle to base	230 - 930 mm
Base Size	610 X 820 mm

Quick Response Center (Workshop Facility)

Pillar Drilling Machine

Drilling Capacity	40 mm
Tapping Capacity	22 mm
spindle Travel	250 mm
column to Spindle distance	380 - 650 mm
Table Size	400 X 400 mm
Nose to base Surface	970 mm



Quick Response Center (Workshop Facility)

Lathe Machine

Bed Length	9 feet
Bed Width	380 mm
Center Height	380 mm
Spindle Hollow	80 mm
Swing over bed	730 mm



Quick Response Center (Workshop Facility)

Roughness Tester



Air Compressor



UT Testing Machine



Laser Alignment Kit



UTT India Private Ltd.

यू टी टी इंडिया प्राइवेट लिमिटेड

JSW
THE JAPAN STEEL WORKS, LTD.

Certified
Service Provider

UTT Gulf Corporation

Quick Response Center (Workshop Facility)

Gas Fired Furnace (Due for delivery)



Type	Gas Fired Furnace -Floor Mounted with Single Trolley
Charge Capacity	3 MT
Operating Temperature	400° C
Design Temperature	500° C
Trolley Size	2000mm W X 1000mm H X 2000mm L
Heat Source	Automatic Gas Burner 2 Nos
Heating Cycle	30° C to 400° C – in 2 Hours Soaking @ 400° C and can be programmable
Burner Location	From Top

Quick Response Center (Workshop Facility)

Surface Plate (Due for delivery)



Granite Surface Plate

**2000mm X 2000mm X
250mm
Table Size**

**Expected date of
delivery – 3rd week of
Feb**

Quick Response Center (Workshop Facility)

EOT Crane (Due for delivery)



Type	Double Girder EOT
Main Hook	20 Ton
Auxiliary Hook	5 Ton

Quick Response Center (Workshop Facility)

Plano Lathe (Proposed)



PLANO LATHE

Bed Width – 36 Inch

Center Height – 36 Inch

Spindle Bore – 110 mm

Distance B/W Center – 5500 mm

Swing over bed – 1700 mm

Swing in Gab – 1400 mm

70 Inch 4 Jaw Dog Chuck

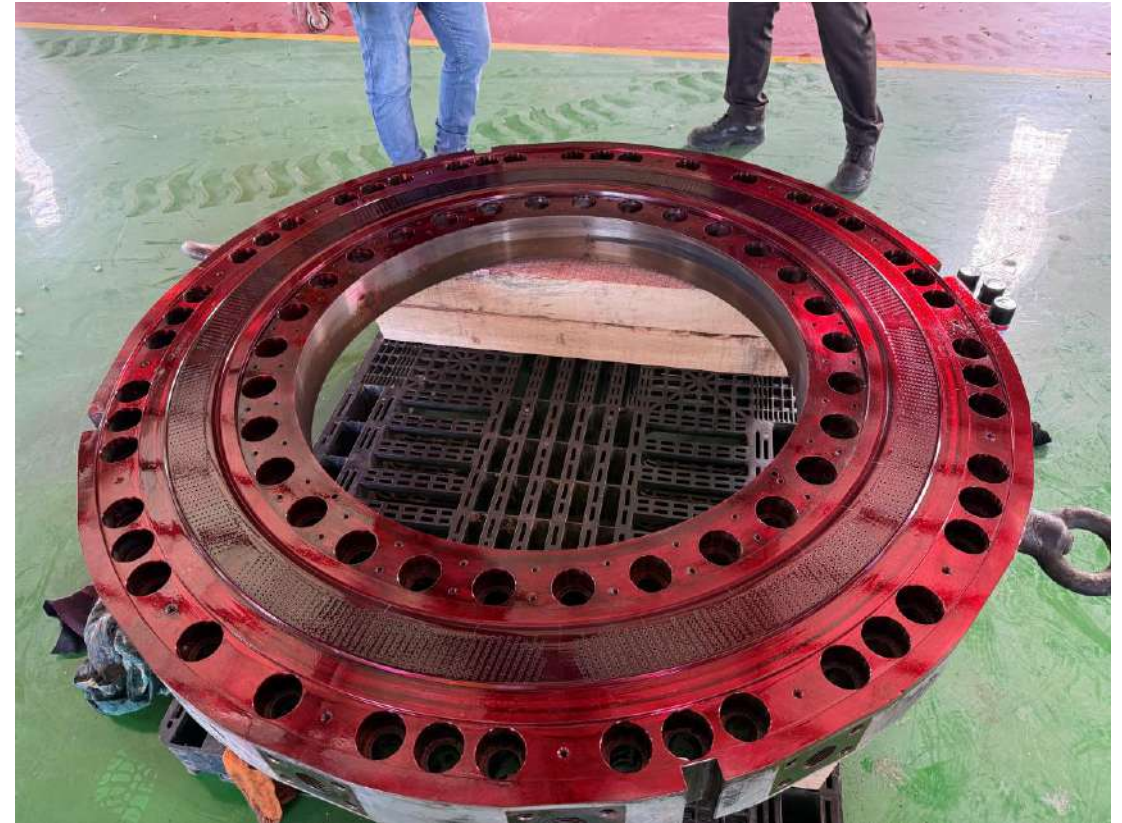
Die Plate Grinding

Completed Projects

Client	Die Plate Size	Remarks
HMEL	DS1300	Completed
OPaL	DS930	Completed
OPaL	DS850	Completed
OPaL	DS930	Under Progress
OPaL	DS930	Under Progress
OPaL	DS850	Under Progress
MRPL	DS850	Under Progress

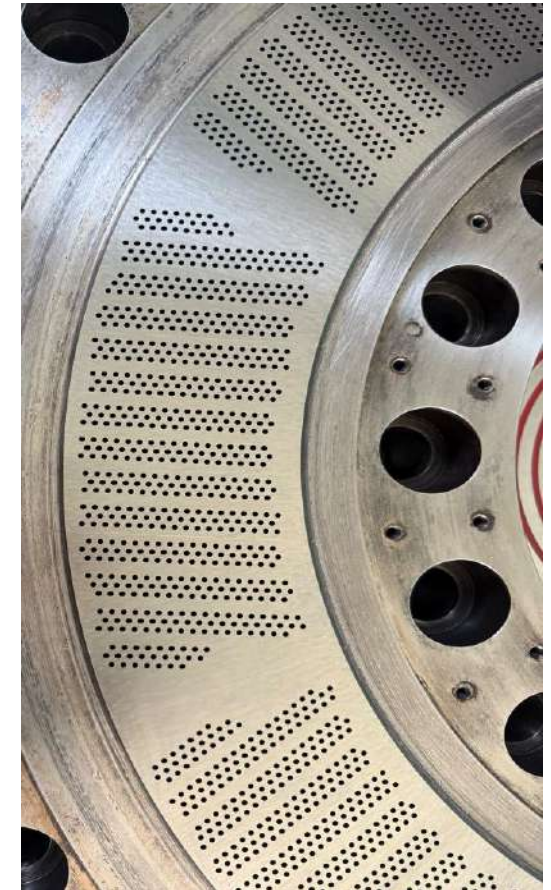
Die Plate Grinding

Picture



Die Plate Grinding

Picture



Die Plate Grinding

Picture



Die Plate Grinding

Picture





Indian Clients Served



OEM Approved Supervisor
Deployment



Die Plate
Refurbishment –
QRC Services



Spare Parts Management



UTT Gulf Corporation