



2020  
*LINE SHEET*

*www.nsbynoof.com*



## KARMA

Code: GGZU753  
 Size: w8cm x h17.5cm x d3.7cm  
 Chain: 130cm  
 Drop length: 68cm  
 Materials: suede, brass, python flap, semi precious stone, tassel  
 WS: BD175, €427.5, \$465, £395  
 RP: BD350, €855, \$930, £790



**COLORS AVAILABLE:**

All colors are available in gold and silver brass



## HALA

Code: GGZT617  
 Size: w26cm x h18cm x d13cm  
 Chain/Strap: 82cm/100-120cm  
 Drop length: 38cm  
 Materials: Italian finishing genuine/python leather, brass, hollow chain, leather strap, semi precious stone, tassel  
 WS (nappa): BD190, €466, \$505, £416  
 RP (nappa): BD380, €937, \$1012, £825  
 WS (python): BD400, €985, \$1064, £868  
 RP (python): BD800, €1970, \$2128, £1735



**COLORS AVAILABLE:**



## MARIYANNA

Code: GGZW343  
 Size: w32cm x h18cm x d6cm  
 Materials: Nappa, brass, Swarovski crystals, semi precious stone  
 WS: BD220, €545, \$590, £490  
 RP: BD440, €1090, \$1180, £980



**COLORS AVAILABLE:**

All colors are available in gold and silver brass



## CANDY

Code: GGZV824  
 Size: w14cm x h20cm x d4.5cm  
 Chain/Belt: 130cm/101-120cm  
 Drop length: cross 65cm/double 30cm  
 Materials: belt, embossed genuine leather, brass, chain, semi precious stone framed in silver/gold  
 WS: BD190, €465, \$510, £430  
 RP: BD380, €930, \$1020, £860



**COLORS AVAILABLE:**



## MINI ZAIN

Code: GGZW334  
 Size: w11cm x h10cm x d5cm  
 Wrist Chain: 120cm  
 Drop length: 60cm  
 Materials: python and genuine leather lining, brass, semi precious stone  
 WS: BD194.5, €475, \$505, £437.5  
 RP: BD389, €950, \$1010, £875



**COLORS AVAILABLE:**

All colors are available in gold and silver brass



## JAZI

Code: GGZW368  
 Size: w22cm x h13cm x d5cm  
 Materials: python and genuine leather lining, brass, semi precious stone  
 WS: BD288, €709, \$770, £625  
 RP: BD576, €1418, \$1540, £1250



**COLORS AVAILABLE:**

All colors are available in gold and silver brass



## GRACE

Code: GGZV680  
Size: w23cm x h28cm x d11cm  
Chain: 80cm  
Drop length: 15-45cm  
Materials: leather, brass flap, semi precious stone  
WS: BD335, €826, \$891, £727.5  
RP: BD670, €1650, \$1782, £1455

### COLORS AVAILABLE:

All colors are available in gold and silver brass

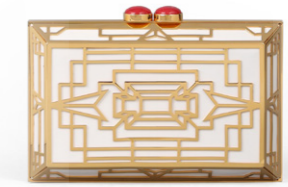


## DAISY

Code: GGZW524  
Size: w18cm x h11cm x d6cm  
Chain: 90cm  
Drop length: 45cm  
Materials: Napa leather, gold/silver plated brass  
WS: BD392, €959, \$1045, £887.5  
RP: BD784, €1918, \$2090, £1775

### COLORS AVAILABLE:

All colors are available in gold and silver brass



## SHOUG

Code: GGZM820  
Size: w15cm x h15cm x d5cm  
Chain: 30/100cm  
Drop length: 60cm  
Materials: leather, brass, 2 semi precious stone, tassel  
WS: BD395, €972.5, \$1055, £895  
RP: BD790, €1945, \$2110, £1790

### COLORS AVAILABLE:

All colors are available in gold and silver brass



## LOLI

Code: GGZW523  
Size: w10cm x h20cm x d10cm  
Wrest Chain: 30cm  
Drop length: 15cm  
Materials: gold/silver plated brass and perplex  
WS: BD401, €987.5, \$1072.5, £907.5  
RP: BD802, €1975, \$2145, £1815

### COLORS AVAILABLE:

All colors are available in gold and silver brass



## LAYLA

Code: GGXV015  
Size: w16cm x h14cm x d4cm  
Wrest Chain: 30cm  
Drop length: 10cm  
Materials: leather, brass, semi precious stone  
WS: BD435, €1058, \$1160, £944  
RP: BD870, €2115, \$2320, £1888

### COLORS AVAILABLE:



## MIMI

Code: GGZR668  
Size: w15cm x h15cm x d5cm  
Strap: 30cm  
Drop length: 15cm  
Materials: perplex, brass, semi precious stone, tassel, leather  
WS: BD435, €1062.5, \$1157.5, £980  
RP: BD870, €2125, \$2315, £1960

### COLORS AVAILABLE:

All colors are available in gold and silver brass



## SHAIKHA

Code: GGZP142  
Size: w20cm x h15cm x d5cm  
Chain: 100cm  
Drop length: 50cm  
Materials: leather, brass, semi precious stone,  
one of a kind bag  
WS: BD475, €1160, \$1265, £1075  
RP: BD950, €2320, \$2530, £2150

### COLORS AVAILABLE:

All colors are available in gold and silver brass



## SAFA

Code: GGZV482  
Size: w15cm x h20cm x d3.5cm  
Chain: 100cm  
Drop length: 45cm  
Materials: brass, perplex, semi precious stone  
WS: BD490, €1200, \$1305, £1110  
RP: BD980, €2400, \$2610, £2220

### COLORS AVAILABLE:



## CROCO

Code: GGZW623  
Size: w18cm x h11cm x d6cm  
Chain: 90cm  
Drop length: 45cm  
Materials: grade A Croco, Napa inside and gold/silver  
plated brass  
WS: BD720, €1755, \$1922.5, £1625  
RP: BD1440, €3510, \$3845, £3250

### COLORS AVAILABLE:

All colors are available in gold and silver brass



## ZAIN

Code: GGZN643  
Size: w19cm x h18cm x d6cm  
Chain: 100cm  
Drop length: 50cm  
Materials: grade A crocodile leather, brass, chain, semi  
precious stone framed in silver brass  
WS: BD1700, €4140, \$4530, £3820  
RP: BD3750, €9130, \$9980, £8420

### COLORS AVAILABLE:





*Daisy*



*Mariyanna*



*Croco*



*Loli*



*Mini Zain*



*Jazi*



*Layla*



*Shaikha*



*Candy*



*Zain*



*Safa*



*Shoug*



*Grace*



*Hala*



*Mimi*



*Karma*



## **CONTACT US**

*Wholesales inquiries*

*info@217pr.com*

*+973 36 533 533*

*PR inquiries*

*eman@217pr.com*

*+973 36 533 533*



*Website: [www.nsbynoof.com](http://www.nsbynoof.com)*

*info@nsbynoof.com*

*+973 3674 6664*

*Instagram: @nsbynoof*

*Facebook: NS by Noof*

*Twitter: @nsbynoof*

*\*Other leather color requests are available  
for pre-ordered bags.*